

TECHNICAL MANUAL

DIRECT SUPPORT AND GENERAL SUPPORT

REPAIR PARTS AND SPECIAL TOOLS LIST

FOR

T R A N S M I S S I O N S

(2520-00-347-4520) (2520-00-884-4833)

T R A N S F E R S

(2520-00-089-8287) (2520-00-001-7855)

P O W E R T A K E - O F F

(2520-00-229-5673) (2520-00-706-1136)

(2520-00-706-1137)

HEADQUARTERS, DEPARTMENT OF THE ARMY

MAY 1976

Technical Manual }
TM 9-2520-246-34P }

HEADQUARTERS
DEPARTMENT OF THE ARMY
WASHINGTON, DC, 28 May 1976

**DIRECT SUPPORT AND GENERAL SUPPORT
REPAIR PARTS AND SPECIAL TOOLS LIST
FOR**

TRANSMISSIONS

(2520-00-347-4520) (2520-00-884-4833)

TRANSFERS

(2520-00-089-8287) (2520-00-001-7855)

POWER TAKE-OFF.

(2520-00-229-5673)(2520-00-706-1136)

(2520-00-706-1137)

Current as of 30 October 1975

| | | Illus Figure | Page |
|---------|---|-----------------|------|
| Section | I. Introduction | | 3 |
| | II. Repair Parts List | | 7 |
| Group | 07. Transmission | | 7 |
| | 0700 Transmission assembly | 1,2 | 7 |
| | 0701 Transmission input and output shafts, countershafts, and idler shafts with gears | 3 | 8 |
| | 0704 Transmission top cover assembly | 4,5 | 9 |
| | 08. Transfer | | 10 |
| | 0601 Power transfer | 6-10 | 10 |
| | 12. Brakes | | 14 |
| | 1201 Parking brake drum and shoes, and related parts | 11 | 14 |
| | 20. Power Take-Off | | 16 |
| | 2004 Power take-off assembly | 12-15 | 16 |
| Section | III. Special Tools List | | 21 |
| Group | 26. Tools and test equipment | | 21 |
| | 2604 Special tools | 16 | 21 |
| Section | IV. National Stock Number and Part Number Index | | 39 |

— This manual supersedes TM9-2520-246-35P, 11 July 1962, including all changes.

SECTION I

INTRODUCTION

1. Scope

This manual lists repair parts with special tools authorized for direct support and general support of: Transmission Assemblies, 2520-00-347-4520 and 2520-00-884-4833; Transfer Assemblies, 2520-00-001-7855, 2520-00-089-8287 and Power Take-Off Assemblies, 2520-00-229-5673, 2520-00-706-1136, 2520-00-706-1137.

2. General

This Repair Parts and Special Tools List is divided into the following sections:

a. *Section II- Repair Parts List.* A list of repair parts authorized for use in the performance of maintenance. The list also includes parts which must be removed for replacement of the authorized parts. Parts lists are composed for functional groups in ascending numerical sequence, with the parts in each group listed in figure and item number sequence. Bulk materials are listed in NSN sequence.

b. *Section III-Special Tools List.* A list of special tools, TMDE, end support equipment authorized for the performance of maintenance at the organizational level.

c. *Section IV-National Stock Number and Part Number Index.* A list, in ascending numerical sequence, of all National stock numbers appearing in the listings, followed by a list, in alphanumeric sequence, of all part numbers appearing in the listings. Federal stock number and part numbers are cross-referenced to each illustration figure and item number appearance. This index is followed by a cross-reference list of reference designations to figure and item numbers when applicable.

3. Explanation of Columns

The following provides an explanation of columns found in the tabular listings:

a. *Illustration.* This column is divided as follows:

(1) *Figure number.* Indicates the figure number of the illustration in which the item is shown.

(2) *Item number.* The number used to identify each item called out in the illustration.

b. *Source, Maintenance, and Recoverability Codes (SMR).*

(1) *Source code.* Source codes are assigned to support items to indicate the manner of acquiring support items for maintenance, repair, or overhaul of end items. Source codes are entered in the first and second positions of the Uniform SMR Code format as follows:

| Code | Definition |
|------|---|
| PA | Item procured and stocked for anticipated or known usage. |
| PB | Item procured and stocked for insurance purpose because essentiality dictates that minimum quantity be available in the supply systems. |
| PC | Item procured and stocked and which otherwise would be coded PA except that it is deteriorative in nature. |
| PD | Support item, excluding support equipment, procured for initial issue or outfitting and stocked only for subsequent or additional initial issues or outfittings. Not subject to automatic replenishment. |
| PE | Support equipment procured and stocked for initial issue or outfitting to specified maintenance repair activities. |
| PF | Support equipment which will not be stocked but which will be centrally procured on demand. |
| PC | Item procured and stocked to provide for sustained support for the life of the equipment. It is applied to an item peculiar to the equipment which, because of probable discontinuance or shutdown of production facilities, would prove uneconomical to reproduce at a later time. |
| KD | An item of a depot overhaul/repair kit and not purchased separately. Depot kit defined as a kit that provides items required at the time of overhaul or repair. |
| KF | An item of a maintenance kit and not purchased separately. Maintenance kit defined as a kit that provides an item that can be replaced at organizational or intermediate levels of maintenance. |
| KB | Item included in both a depot overhaul/repair kit and a maintenance kit. |
| MO | Item to be manufactured or fabricated at organizational level. |
| MF | Item to be manufactured or fabricated at the direct support maintenance level. |
| MH | Item to be manufactured or fabricated at the general support maintenance level. |
| MD | Item to be manufactured or fabricated at the depot maintenance level. |
| AO | Item to be assembled at organizational level. |
| AF | Item to be assembled at direct support maintenance level. |
| AH | Item to be assembled at general support maintenance level. |
| AD | Item to be assembled at depot maintenance level. |
| XA | Item is not procured or stocked because the requirements for the item will result in the replacement of the next higher assembly. |
| XB | Item is not procured or stocked. If not available through salvage, requisition. |
| XD | A support item that is not stocked. When required, item will be procured through normal supply channels. |

NOTE

Cannibalization or salvage may be used as a source of supply for any items source coded above except those coded XA, XD, and aircraft support items as restricted by AR 700-42.

(2) *Maintenance code.* Maintenance codes are gned to indicate the levels of maintenance **horized** to USE and REPAIR support items. The ntenance codes are entered in the third and th positions of the Uniform SMR Code format as ows:

(a) The maintenance code entered in the d position will indicate the lowest maintenance d authorized to remove, replace, and use the port item. The maintenance code entered in the d position will indicate one of the following levels maintenance:

Application/Explanation

- Crew or operator** maintenance performed within organizational maintenance.
- Support item is removed, replaced, used at the organizational level.**
- Support item is removed, replaced, used by the direct support element of integrated direct support maintenance.**
- Support item is removed, replaced used at the direct support level.**
- Support item is removed, replaced, used at the general support level.**
- Support items that are removed, replaced, used at depot, mobile depot, specialized repair activity only.**

NOTE

Codes "I" and "F" will be considered the same by direct support units.

(b) The maintenance code entered in the th position indicates whether the item is to be iired and identifies the lowest maintenance level 1 the capability to perform complete repair (i. e., mthorized maintenance functions). This position contain one of the following maintenance codes:

Application/Explanation

- The lowest maintenance level capable of complete repair of the support item is the organizational level.**
- The lowest maintenance level capable of complete repair of the support item is the direct support level.**
- The lowest maintenance level capable of complete repair of the support item is the general support level.**
- The lowest maintenance level capable of complete repair of the support item is the depot level, performed by depot, mobile depot or specialized repair activity.**
- Repair restricted to designated specialized repair activity.**
- Nonreparable. No repair is authorized.**
- No repair is authorized. The item may be reconditioned by adjusting, lubricating, etc., at the user level. No parts or special tools are procured for the maintenance of this item.**

(3) *Recoverability code.* Recoverability codes

are assigned to support items to indicate the disposition action on unserviceable items. The recoverability code is entered in the fifth position of the Uniform SFR Code format as follows:

| Recoverability code | Definition |
|----------------------------|--|
| Z | Nonreparable item. When unserviceable, condemn and dispose at the level indicated in position 3. |
| O | Reparable item. When uneconomically repairable, condemn and dispose at organizational level. |
| F | Reparable item. When uneconomically repairable, condemn and dispose at the direct support level. |
| H | Reparable item. When uneconomically repairable, condemn and dispose at the general support level. |
| D | Reparable item. When beyond lower level repair capability, return to depot. Condemnation and disposal not authorized below depot level. |
| L | Reparable item. Repair, condemnation, and disposal not authorized below depot/specialized repair activity level. |
| A | Item requires special handling or condemnation procedures because of specific reasons (i.e., precious metal content, high dollar value, critical material or hazardous material). Refer to appropriate manuals/directives for specific instructions. |

c. *National Stock Number.* Indicates the National stock number assigned to the item and will be used for requisitioning purposes.

d. *Part Number.* Indicates the primary number used by the manufacturer (individual, company, firm, corporation, or Government activity), which controls the design and characteristics of the item by means of its engineering drawings, specifications standards, and inspection requirements, to identify an item or range of items.

NOTE

When a stock numbered item is requisitioned, the repair part received may have a different part number than the part being replaced.

e. *Federal Supply Code for Manufacturer (FSCM).* The FSCM is a 5-digit numeric code listed in SB708-42 which is used to identify the manufacturer, distributor, or Government agency, etc.

f. *Unit of Measure (U/M).* Indicates the standard of the basic quantity of the listed item as used in performing the actual maintenance function. This measure is expressed by a two-character alphabetical abbreviation (e.g., ea, in, pr, etc). When the unit of measure differs from the unit of issue, the lowest unit of issue that will satisfy the required units of measure will be requisitioned.

g. *Quantity Furnished with Equipment.* (Basic Issue Items Only). Indicates the quantity of the basic issue item furnished with the equipment.

h. *Quantity Authorized.* (Items Troop Installed or Authorized Only). Indicates the quantity of the item authorized to be used with the equipment.

i. *Quantity Incorporated in Unit.* Indicates the

quantity of the item used in the breakout shown on the illustration figure, which is prepared for a functional group, subfunctional group, or an assembly. A "V" appearing in this column in lieu of a quantity indicates that no specific quantity is applicable, (e.g., shims, spacers, etc.).

4. Special Information

a Components contained in this manual are applicable to the Truck, Cargo: 2 1/2 Ton, 6x6, M44 Series (TM9-2320-209).

| Component | End item | | |
|---|-------------------------------|---------------|-------------------|
| Transmission (2520-00-347-4520) | M44 Series (gasoline) | | |
| Transmission (2520-00-884-4833) | M44 Series (multifuel) | | |
| Transfer (2520-00-089-8287) | M352A | M45A2G | M29A2 |
| | M35A2C | M46A2 | M342A2 |
| | M36A2 | M46A2C | M621 |
| | M36A2C | M109A3 | M622 |
| | M44A2 | M185A3 | M623 |
| | M45A2 | M275A2 | M624 |
| Transfer (2520-00-001-7855) | M44 | | |
| Power Take-Off (2520-00-229-5673) | M621 | M623 | |
| | M622 | M624 | |
| Power Take-Off (2520-00-706-1136) | M47 | M58 | M59 |
| | M57 | M58A1 | M352 |
| Power Take-Off (2520-00-706-1137) | M34 | M46 | M108 |
| | M35 | M46A1 | M109 |
| | M35A1 | M46C | M109A1 |
| | M35A2 | M48 | M109A2 |
| | M36A2 | M49 | M109A3 |
| | M36C | M49A1C | M109C |
| | M44 | M49A2C | M109D |
| | M44A1 | M49C | M275 |
| | M44A2 | M50 | M275A1 |
| | M45 | M50A1 | M275A2 |
| | M45A1 | M50A2 | VT17-A/MTQ |
| | M45A2 | M60 | VT18-A/MTQ |

b. Usable on codes are shown in the description column. Uncoded items are applicable to all models. Identification of the usable on codes used in this publication are:

| Code | Used on |
|-------------|---|
| A | Transmission (2520-00-347-4520) — Gasoline Engine |
| B | Transmission (2520-00-884-4833) — Multifuel Engine |
| C | Power Take-off (2520-00-706-1136) — Front and Rear Output Shafts |
| D | Power Take-off (2520-00-706-1137) — Front Output Shaft only |
| E | Transfer (2520-00-001-7855) — Spring type (w/improved oiling) |
| F | Transfer (2520-00-089-8287) — Air lock-up |
| H | Power Take-off (2520-00-229-5673) — |

c. Detailed manufacturing instructions for items source coded to be manufactured or fabricated are found in TM9-2815-246-35.

d. Detailed assembly instructions for items source coded to be assembled are found in TM 9-2815-246-35.

e. Repair parts kits and gasket set appear as the last entries in the repair parts listing for the figure in which its parts are listed as repair parts. Kits or Sets whose separate components appear as repair parts in more than one figure will be found immediately

following the repair parts listing for the last figure containing parts of the Kit.

f. The following publication pertains to transmission, transfers and power take-offs installed on M44 series vehicles.

| Publication No. | Title |
|-------------------------|--|
| TM 9-2520-246-35 | Direct Support, General Support and Depot Maintenance for Transmissions, Transfers and Power Take-offs. |

5. How to Locate Repair Parts

a. When National Stock Number or Part Number is Unknown:

(1) *First.* Using the table of contents, determine the functional subgroup within which the repair part belongs. This is necessary since illustrations are prepared for subgroups, and listings are divided into the same group.

(2) *Second.* Find the illustration covering the functional subgroup to which the repair part belongs.

(3) *Third.* Identify the repair part on the illustration and note the illustration figure and item number of the repair part.

(4) Fourth. Using the Repair Parts Listing, the figure and item number noted on the illustration.

When National Stock Number or Part Number **known:**

(1) *First.* Using the Index of National Stock Numbers and Part Numbers, find the pertinent National Stock Number or part number. This index ascending NSN sequence followed by a list of numbers in ascending alphanumeric sequence, s-referenced to the illustration figure number item number.

(2) *Second.* After finding the figure and item number, locate the figure and item number in the repair parts list.

6. Reporting of Errors

You can improve this manual by recommending improvements. Mail your comments direct to Commander, US Army Tank-Automotive Command, ATTN: DRSTA-MTP, Warren, MI 48090, using DA Form 2028, (Recommended Changes to Publications and Blank Forms). A reply will be sent direct to you.

SECTION II

REPAIR PARTS LIST

| (1) | (2) | (3) | (4) | (5) | (6) | (7) | (8) |
|--|------|----------|------------------|------------|----------------|-----|------|
| ILLUSTRATION | | | | | | | QTY |
| (a) (b) | SMR | NATIONAL | PART | FSCM | DESCRIPTION | U/M | INC |
| FIG. ITEM | CODE | STOCK | NUMBER | | | | IN |
| NO. NO. | | NUMBER | | | USABLE ON CODE | | UNIT |
| GROUP 07-TRANSMISSION | | | | | | | |
| 0700-TRANSMISSION ASSEMBLY | | | | | | | |
| 1 | 1 | PAFZZ | 5305-00-317-3102 | 594119 | 21450 | | |
| | | | | | | EA | 12 |
| 1 | 2 | PAOZZ | 4820-00-726-4719 | 5196397 | 19207 | | |
| | | | | | | EA | 1 |
| 1 | 3 | PAFHH | 2520-00-347-4520 | 7520995 | 19207 | | |
| | | | | | | EA | 1 |
| 1 | 3 | PAFHH | 2520-00-884-4833 | 10872096 | 19207 | | |
| | | | | | | EA | 1 |
| 2 | 1 | PAFZZ | 3110-00-198-1502 | 2135-1 | 08162 | | |
| | | | | | | EA | 1 |
| 2 | 2 | PAFZZ | 2520-00-752-0966 | 7520966 | 19207 | | |
| | | | | | | EA | 1 |
| 2 | 3 | PAFZZ | 5306-00-174-4202 | 5214807 | 19207 | | |
| | | | | | | EA | 2 |
| 2 | 4 | PAFZZ | 5310-00-209-0965 | MS35338-47 | 96906 | | |
| | | | | | | EA | 2 |
| 2 | 5 | PAFZZ | 5310-00-661-9568 | 5226033 | 19207 | | |
| | | | | | | EA | 2 |
| 2 | 6 | PAFZZ | 2520-00-752-0967 | 7520967 | 19207 | | |
| | | | | | | EA | 1 |
| 2 | 7 | PAFZZ | 5330-00-752-0959 | 7520959 | 19207 | | |
| | | | | | | EA | 1 |
| 2 | 8 | PAFZZ | 5340-00-752-0976 | 7520976 | 19207 | | |
| | | | | | | EA | 1 |
| 2 | 9 | PAFZZ | 2520-00-752-0952 | 7520952 | 19207 | | |
| | | | | | | EA | 1 |
| 2 | 10 | PAOZZ | 4730-00-172-0034 | MS15003-7 | 19207 | | |
| | | | | | | EA | 1 |
| 2 | 11 | PAFZZ | 5330-00-286-6815 | 500021 | 19207 | | |
| | | | | | | EA | 1 |
| 2 | 12 | PAOZZ | 5306-00-044-5319 | 8712073 | 19207 | | |
| | | | | | | EA | 10 |
| 2 | 13 | PAHZZ | 2520-00-508-4664 | 7520989 | 19207 | | |
| | | | | | | EA | 1 |
| 2 | 14 | PAHZZ | 5330-00-594-8953 | 7520992 | 19207 | | |
| | | | | | | EA | 1 |
| 2 | 15 | PAFZZ | 5330-00-752-0958 | 7520958 | 19207 | | |
| | | | | | | EA | 1 |
| 2 | 16 | XAHZZ | | 7520988 | 19207 | | |
| | | | | | | EA | 1 |
| 2 | 17 | PAFZZ | 5330-00-752-1061 | 7521061 | | | |
| | | | | | | | |
| 2 | 18 | KFHZZ | | 7521004 | 19207 | | |
| | | | | | | | |
| 2 | 19 | PAHZZ | 2520-00-692-6065 | 7521007 | 19207 | | |
| | | | | | | EA | 1 |
| 2 | 20 | XAHZZ | | 7748571 | 19207 | | |
| | | | | | | EA | 1 |
| 2 | 21 | PAHZZ | 5330-00-350-9958 | 583509 | 21450 | | |
| | | | | | | EA | 1 |
| 2 | 22 | PAHZZ | 5306-00-021-4077 | 8743049 | 19207 | | |
| | | | | | | EA | 16 |
| MAINSHAFT (6), COUNTERSHAFT (4), POWER TAKE-OFF ACCESS COVER (6) | | | | | | | |

| (1) | (2) | (3) | (4) | (5) | (6) | (7) | (8) |
|--------------|------|------------------------|-------------|-------|---|-----|------|
| ILLUSTRATION | | | | | | | QTY. |
| (a) (b) | SMR | NATIONAL | PART | FSCM | DESCRIPTION | U/M | INC. |
| FIG. ITEM | CODE | STOCK | NUMBER | | | | IN |
| NO. NO. | | NUMBER | | | USABLE ON CODE | | UNIT |
| | | | | | 0700-TRANSMISSION ASSEMBLY-CONTINUED | | |
| 2 | 23 | PAHZZ 2520-00-692-6070 | 7521038 | 19207 | COVER:TRANSFER,COUNTERSHAFT REAR BEARING | EA | 1 |
| 2 | 24 | PAOZZ 4730-00-278-3380 | MS49005-10 | 96906 | PLUG,PIPE:OIL FILLER AND DRAIN | EA | 2 |
| 2 | 25 | PAHZZ 2520-00-752-1039 | 7521039 | 19207 | GASKET:COUNTERSHAFT REAR BEARING COVER(PART OF SET 2520-00-752-0987) | | |
| 2 | 26 | PAHZZ 5330-00-234-3317 | 8327322 | 19207 | GASKET:ACCESS HOLE,POWER TAKE-OFF (PART OF SET 5330-00-752-0987) | EA | 1 |
| 2 | 27 | PAHZZ 2520-00-354-0771 | 5323473 | 19207 | COVER:ACCESS,TRANSMISSION CASE,POWER TAKE-OFF | EA | 1 |
| 2 | 28 | PAHZZ 2520-00-752-1032 | 7521032 | 19207 | RETAINER:COUNTERSHAFT FRONT BEARING | EA | 1 |
| 2 | 29 | PAFZZ 2520-00-752-0979 | 7520979 | 19207 | SHAFT:CLUTCH THROW-OUT LEVER | EA | 1 |
| 2 | 30 | PAOZZ 5330-00-752-0957 | 7520957 | 19207 | GASKET: INSPECTION HOLE COVER(PART OF SET 5330-00-752-0987) | EA | 1 |
| 2 | 31 | PAOZZ 2520-00-752-0956 | 7520956 | 19207 | COVER PLATE:INSPECTION HOLE ACCESS | EA | 1 |
| 2 | 32 | PAFZZ 5310-00-584-5272 | MS35338-48 | 96906 | WASHER,LOCK:CLUTCH HOUSING | EA | 5 |
| 2 | 33 | PAFZZ 5305-00-716-8184 | MS90726-112 | 96906 | SCREW,CAP,HEXAGON HEAD:CLUTCH HOUSING | EA | 5 |
| 2 | 34 | PAFZZ 5340-00-392-4017 | 7520980 | 19207 | SPRING:CLUTCH RELEASE BEARING CARRIER | EA | 2 |
| 2 | 35 | PAFZZ 2520-00-752-0965 | 7520965 | 19207 | BUTTON:CLUTCH RELEASE BEARING CARRIER | EA | 2 |
| 2 | 36 | PAOZZ 4730-00-050-4208 | MS15003-1 | 96906 | FITTING:LUBRICATION:CLUTCH RELEASE BEARING CARRIER | EA | 1 |
| | | PAHZZ 2520-00-752-0987 | 7520987 | 19207 | GASKET SET:TRANSMISSION ASSEMBLY | EA | 1 |
| 2 | 14 | | | | GASKET:INPUT SHAFT BEARING COVER | EA | 1 |
| 2 | 15 | | | | GASKET:CLUTCH HOUSING | EA | 1 |
| 2 | 17 | | | | GASKET:TRANSMISSION CASE | EA | 1 |
| 2 | 18 | | | | GASKET:BEARING RETAINER | EA | 1 |
| 2 | 25 | | | | GASKET:COUNTERSHAFT REAR BEARING COVER | EA | 1 |
| 2 | 26 | | | | GASKET:ACCESS HOLE,POWER TAKE-OFF | EA | 1 |
| 2 | 30 | | | | GASKET:INSPECTION HOLE COVER | EA | 1 |
| | | | | | 0701-TRANSMISSION INPUT AND OUTPUT SHAFTS, COUNTERSHAFTS AND IDLER SHAFTS WITH GEARS | | |
| 3 | 1 | PAHZZ 5365-00-508-4675 | 7520993 | 19207 | RING,RETAINING:SNAP,INPUT SHAFT BEARING | EA | 1 |
| 3 | 2 | PAHZZ 3110-00-554-5960 | 700955 | 21450 | BEARING,BALL,ANNULAR,INPUT SHAFT,FRONT | EA | 1 |
| 3 | 3 | PAHZZ 2520-00-752-0994 | 7520994 | 19207 | SHAFT:INPUT WITH INTEGRAL GEAR(GAS) A | EA | 1 |
| 3 | 3 | PAHZZ 2520-00-885-3423 | 10914635 | 19207 | SHAFT:INPUT,WITH INTEGRAL GEAR(MULTIFUEL) B | EA | 1 |
| 3 | 4 | PAHZZ 3110-00-227-4123 | 7521010 | 19207 | ROLLER BEARING:INPUT SHAFT | EA | 14 |
| 3 | 5 | PAHZZ 2520-00-752-1022 | 7521022 | 19207 | SYNCHRONIZER,TRANSMISSION:FOURTH AND FIFTH SPEEDS | EA | 1 |
| 3 | 6 | PAHZZ 5365-00-699-8456 | 7521008 | 19207 | RING,RETAINING:SNAP FOURTH SPEED GEAR | EA | 1 |
| 3 | 7 | PAHZZ 5310-00-285-2169 | 7521024 | 19207 | WASHER,KEYWAY:INPUT SHAFT | EA | 1 |
| 3 | 8 | PAHZZ 3020-00-752-1015 | 7521015 | 19207 | GEAR,HELICAL:FOURTH SPEED (GAS) A | EA | 1 |
| 3 | 8 | PAHZZ 4730-00-884-4838 | 10914637 | 19207 | GEAR,HELICAL:MAINSHAFT,FOURTH SPEED (MULTIFUEL) B | EA | 1 |
| 3 | 9 | PAHZZ 5315-00-699-8458 | 7521018 | 19207 | PIN:STRAIGHT HEADED,FOURTH SPEED GEAR(SLEEVE) | EA | 1 |
| 3 | 10 | PAHZZ 3120-00-752-1020 | 7521020 | 19207 | BEARING,SLEEVE:FOURTH SPEED GEAR | EA | 1 |
| 3 | 11 | PAHZZ 3020-00-752-1016 | 7521016 | 19207 | GEAR,HELICAL:THIRD SPEED | EA | 1 |
| 3 | 12 | PAHZZ 2520-00-752-1023 | 7521023 | 19207 | SYNCHRONIZER,TRANSMISSION:SECOND AND THIRD SPEED | EA | 1 |
| 3 | 13 | PAHZZ 5365-00-699-8457 | 7521009 | 19207 | RING:RETAINING:CLUTCH GEAR | EA | 1 |
| 3 | 14 | PAHZZ 3020-00-752-1005 | 7521005 | 19207 | GEAR:CLUTCH,SECOND AND THIRD SPEED | EA | 1 |

| (1) | (2) | (3) | (4) | (5) | (6) | (7) | (8) |
|--------------|------|-------|------------------|--------------|-------|---|------|
| ILLUSTRATION | | | | | | | QTY. |
| (a) | (b) | SMR | NATIONAL | PART | FSCM | DESCRIPTION | U/M |
| FIG. | ITEM | CODE | STOCK | NUMBER | | | INC. |
| NO. | NO. | | NUMBER | | | USABLE ON CODE | IN |
| | | | | | | | UNIT |
| | | | | | | 0701-TRANSMISSION INPUT AND OUTPUT SHAFTS, COUNTERSHAFTS AND IDLER SHAFTS WITH GEARS-CONTINUED | |
| 3 | 15 | PAHZZ | 3020-00-752-1017 | 7521017 | 19207 | GEAR,HELICAL:SECOND SPEED | EA 1 |
| 3 | 16 | PAHZZ | 5315-00-012-4553 | MS35756-17 | 96906 | KEY,WOODRUFF:SYNCHRONIZER SLEEVE | EA 2 |
| 3 | 17 | PAHZZ | 2520-00-752-1019 | 7521019 | 19207 | SHAFT:MAIN | EA 1 |
| 3 | 18 | PAHZZ | 3020-00-752-1006 | 7521006 | 19207 | GEAR,SPUR:FIRST SPEED AND REVERSE | EA 1 |
| 3 | 19 | PAHZZ | 3110-00-155-6706 | 700772 | 00000 | BEARING,BALL,ANNULAR:REAR,MAIN SHAFT | EA 1 |
| 3 | 20 | PAHZZ | 5365-00-752-1021 | 7521021 | 19207 | SPACER,SLEEVE:REAR BEARING,MAIN SHAFT | EA 1 |
| 3 | 21 | PAHZZ | 5315-00-298-1481 | MS24665-357 | 96906 | PIN,COTTER:SLOTTED NUT | EA 2 |
| 3 | 22 | PAHZZ | 5310-00-529-4103 | 5294103 | 19207 | NUT,PLAIN,SLOTTED:MAIN SHAFT(1),COUNTER(1) | EA 2 |
| 3 | 23 | PAHZZ | 2520-00-752-1003 | 7521003 | 19207 | FLANGE,COMPANION,UNION:MAIN SHAFT | EA 1 |
| 3 | 24 | PAHZZ | 3020-00-752-1031 | 7521031 | 19207 | GEAR,HELICAL:COUNTERSHAFT DRIVE (GAS) A | EA 1 |
| 3 | 24 | PAHZZ | 2520-00-884-4835 | 10914636 | | GEAR,HELICAL:COUNTERSHAFT DRIVE(MULTIFUEL) B | EA 1 |
| 3 | 25 | PAHZZ | 5365-00-752-1046 | 7521046 | 19207 | RING:RETAINING:DRIVE GEAR(1)FOURTH SPEED GEAR(1) | EA 2 |
| 3 | 26 | PAHZZ | 3020-00-752-1029 | 7521029 | 19207 | GEAR,HELICAL:COUNTERSHAFT FOURTH SPEED (GAS) A | EA 1 |
| 3 | 26 | PAHZZ | 2520-00-884-4832 | 10914638 | 19207 | GEAR,HELICAL:COUNTERSHAFT FOURTH SPEED (MULTIFUEL) B | EA 1 |
| 3 | 27 | PAHZZ | 5315-00-058-8583 | MS35756-110 | 96906 | KEY,WOODRUFF:GEAR RETAINING,HELICAL DRIVE AND FOURTH SPEED COUNTERSHAFT | EA 2 |
| 3 | 28 | PAHZZ | 2520-00-752-1037 | 7521037 | 19207 | COUNTERSHAFT:WITH INTEGRAL GEARS | EA 1 |
| 3 | 29 | PAHZZ | 3110-00-155-6686 | 700771 | 21450 | BEARING,BALL,ANNULAR:COUNTERSHAFT REAR | EA 1 |
| 3 | 30 | PAHZZ | 5310-00-752-1036 | 7521036 | 19207 | WASHER,FLAT:COUNTERSHAFT NUT | EA 1 |
| 3 | 31 | PAHZZ | 2520-00-752-1047 | 7521047 | 19207 | SHAFT:REVERSE IDLER GEAR | EA 1 |
| 3 | 32 | PAHZZ | 3120-00-752-1049 | 7521049 | 19207 | WASHER,THRUST:REVERSE IDLER GEAR | EA 1 |
| 3 | 33 | PAHZZ | 3110-00-120-4276 | 708231 | 00000 | ROLLER ASSEMBLY:BEARING,IDLER GEAR | EA 2 |
| 3 | 34 | PAHZZ | 3020-00-752-1030 | 7521030 | 19207 | GEAR CLUSTER:HELICAL:REVERSE IDLER | EA 1 |
| 3 | 35 | PAHZZ | 5365-00-752-1045 | 7521048 | 19207 | RING,RETAINING:DRIVE GEAR,COUNTERSHAFT | EA 1 |
| 3 | 36 | PAHZZ | 5310-00-752-1048 | 7521048 | 19207 | WASHER,FLAT:FRONT BEARING,COUNTERSHAFT | EA 1 |
| 3 | 37 | PAHZZ | 3110-00-117-0693 | 707617 | 00000 | BEARING,ROLLER CYLINDRICAL:COUNTERSHAFT,FRONT | EA 1 |
| | | | | | | 0704-TRANSMISSION TOP COVER ASSEMBLY | |
| 4 | 1 | PAFZZ | 2520-00-347-4591 | 7521056 | 19207 | COVER ASSEMBLY:GEAR SHIFT:TRANSMISSION | EA 1 |
| 4 | 2 | PAOZZ | 5355-00-962-3018 | 6184279 | 19207 | KNOB;GEAR SHIFT HAND LEVER | EA 1 |
| 4 | 3 | PAOZZ | 2520-00-692-6072 | 7521062 | 19207 | BOOT,DUST AND MOISTURE:GEAR SHIFT HAND LEVER | EA 1 |
| 4 | 4 | PAFZZ | 2520-00-930-3138 | 10937790 | 19207 | LEVER:HAND GEAR SHIFT | EA 1 |
| 4 | 5 | PAFZZ | 5310-00-209-0965 | MS35338-47 | 96906 | WASHER,LOCK:HAND LEVER CLAMP | EA 1 |
| 4 | 6 | PAFZZ | 5310-00-880-7745 | MS51968-11 | 96906 | NUT,PLAIN HEXAGON,HEAD LEVER CLAMP | EA 1 |
| 4 | 7 | PAFZZ | 5310-00-692-6101 | 7539146 | 19207 | PIN,STRAIGHT HEADED,PIVOT,GEAR SHAFT | EA 2 |
| 4 | 8 | PAFZZ | 2520-00-627-5978 | 7529023 | 19207 | COVER:TRANSMISSION | EA 1 |
| 4 | 9 | PAFZZ | 5330-00-752-7750 | MS35769-4 | 96906 | GASKET:SHIFTER SHAFT,INTERLOCK ATTACHMENT | EA 4 |
| 4 | 10 | PAFZZ | 5310-00-984-3807 | MS51922-13 | 96906 | NUT:SHIFTER SHAFT ATTACHING | EA 2 |
| 4 | 11 | PAFZZ | 5306-00-021-4077 | 8743049 | 19207 | SCREW,ASSEMBLED LOCKWASHER:TRANSMISSION COVER | EA 8 |
| 4 | 12 | PAFZZ | 5330-00-454-0338 | MS51915-21-1 | 96906 | SEAL,PLAIN ENCASED:SHIFTER SHAFT | EA 1 |

| (1) | (2) | (3) | (4) | (5) | (6) | (7) | (8) | |
|--|--------------|----------|-----------------------|-------------|-------|---|------|--------------|
| ILLUSTRATION | | | | | | | QTY. | |
| (a) FIG. NO. | (b) ITEM NO. | SMR CODE | NATIONAL STOCK NUMBER | PART NUMBER | FSCM | DESCRIPTION | U/M | INC. IN UNIT |
| | | | | | | USABLE ON CODE | | |
| 0704-TRANSMISSION TOP COVER ASSEMBLY-CONTINUED | | | | | | | | |
| 4 | 13 | PAFZZ | 2520-00-752-1094 | 7521094 | 19207 | BRACKET,SHIFTER SHAFT:REVERSE GEAR | EA | 1 |
| 4 | 14 | PAFZZ | 5305-00-752-1058 | 7521058 | 19207 | SCREW:LOCK,SHIFTER FORK | EA | 4 |
| 4 | 15 | PAFZZ | 2520-00-752-1060 | 7521060 | 19207 | FORK:SHIFTER,REVERSE GEAR | EA | 1 |
| 4 | 16 | PAFZZ | 2520-00-752-1097 | 7521097 | 19207 | SHAFT,STRAIGHT:REVERSE GEAR SHIFTER | EA | 1 |
| 4 | 17 | PAFZZ | 9605-00-248-9850 | MS20995F47 | 96906 | LOCKWIRE:SETSCREW,SHIFTER FORK | EA | V |
| 4 | 18 | PAFZZ | 5360-00-347-4563 | 7521100 | 19207 | SPRING,HELICAL,COMPRESSION:SHIFTER SHAFT DETENT BALL | EA | 3 |
| 4 | 19 | PAFZZ | 3110-00-142-6040 | MS19061-11 | 96906 | BALL,BEARING:SHIFTER SHAFT DETENTS | EA | 3 |
| 4 | 20 | PAFZZ | 2520-00-752-1093 | 7521093 | 19207 | LEVER:HAND GEAR SHIFT EXTENSION | EA | 1 |
| 4 | 21 | PAFZZ | 2520-00-752-1096 | 7521096 | 19207 | SEAT,HELICAL,COMPRESSION:GEAR SHIFT LEVER SUPPORT SPRING | EA | 1 |
| 4 | 22 | PAFZZ | 5360-00-692-6075 | 7521102 | 19207 | SPRING,HELICAL,COMPRESSION:SUPPORT SHIFTER LEVER | EA | 1 |
| 4 | 23 | PAFZZ | 5365-00-699-8459 | 7521095 | 19207 | RING,RETAINING:SHIFT LEVER SUPPORT SPRING | EA | 1 |
| 4 | 24 | PAFZZ | 2520-00-933-3112 | 10937974 | 19207 | PLATE,INTERLOCK:SHIFTER SHAFT | EA | 1 |
| 4 | 25 | PAFZZ | 5360-00-692-6074 | 7521101 | 19207 | SPRING,HELICAL,COMPRESSION:SHIFTER SHAFT INTERLOCK | EA | 2 |
| 4 | 26 | PAFZZ | 5310-00-167-0820 | 48488 | 62983 | WASHER,FLAT:SHIFTER SHAFT INTERLOCK | EA | 2 |
| 4 | 27 | PAFZZ | 5340-00-050-1593 | MS35648-5 | 96906 | PLUG,EXPANSION:SHIFTER SHAFT | EA | 3 |
| 4 | 28 | PAFZZ | 2520-00-752-1099 | 7521099 | 19207 | SHAFT,SHIFTER:SECOND,THIRD,FOURTH AND FIFTH SPEED GEARS | EA | 2 |
| 4 | 29 | PAFZZ | 2520-00-752-1057 | 7521057 | 19207 | FORK,SHIFTER:FOURTH AND FIFTH GEARS | EA | 1 |
| 4 | 30 | PAFZZ | 2520-00-752-1059 | 7521059 | 19207 | FORK,SHIFTER:SECOND AND THIRD GEARS | EA | 1 |
| 4 | 31 | PAFZZ | 5306-00-752-1055 | 7521055 | 19207 | BOLT,SHOULDER:TOP COVER ASSEMBLY | EA | 2 |
| 4 | 32 | PAFZZ | 5305-00-710-4195 | MS90726-90 | 96906 | SCREW:SHIFT LEVER CLAMP | EA | 1 |
| GROUP 0800-TRANSFER | | | | | | | | |
| 0801-POWER TRANSFER | | | | | | | | |
| 5 | 1 | PAFZZ | 5310-00-241-6664 | MS51943-44 | 96906 | NUT,SELF-LOCKING,HEXAGON;SUPPORT STUD, TRANSFER ASSEMBLY | EA | 10 |
| 5 | 2 | PAFZZ | 5307-00-695-7213 | 8331791 | 19207 | STUD,PLAIN:SUPPORT,TRANSFER ASSEMBLY | EA | 10 |
| 5 | 3 | PAFHH | 2520-00-001-7855 | 11609226 | 19207 | TRANSFER,TRANSMISSION;ASSEMBLY WITH FLANGE E (ROCKWELL-STANDARD MODEL T-136-21) | EA | 1 |
| 5 | 4 | PAFHH | 2520-00-089-8287 | 11609224 | 19207 | TRANSFER,TRANSMISSION;ASSEMBLY WITH FLANGE F (W-AIR SHIFT) (ROCKWELL STANDARD MODEL,T-136-27) | | |
| 6 | 1 | XAHZZ | | 7521363-1 | 19207 | CASE WITH COVER ASSEMBLY:TRANSFER TRANSMISSION | EA | 1 |
| 6 | 2 | PAFZZ | 5305-00-071-1788 | MS90728-87 | 96906 | SCREW,CAP,HEXAGON HEAD:REAR BEARING RETAINER, OUTPUT SHAFT | EA | 6 |
| 6 | 3 | PAHZZ | 5310-00-209-0965 | MS35338-47 | 96906 | WASHER,LOCK:TRANSFER CASE FRONT COVER(39), TOP COVER(4),BEARING RETAINER CAP(6), BEARING COVER(6) | EA | 55 |
| 6 | 4 | PAHZZ | 5305-00-071-2056 | MS90728-90 | 96906 | SCREW,CAP,HEXAGON HEAD:BEARING COVER E COUNTERSHAFT | EA | 4 |

| (1) | (2) | (3) | (4) | (5) | (6) | (7) | (8) | |
|--------------|------|-------|------------------|------------|-------|---|-----|------|
| ILLUSTRATION | | | | | | | | |
| (a) | (b) | SMR | NATIONAL | PART | FSCM | DESCRIPTION | U/M | QTY. |
| FIG. | ITEM | CODE | STOCK | NUMBER | | | | INC. |
| NO. | NO. | | NUMBER | | | USABLE ON CODE | | IN |
| | | | | | | | | UNIT |
| | | | | | | 0801-POWER TRANSFER-CONTINUED | | |
| 6 | 5 | PAHZZ | 5305-00-165-8250 | 11609328-1 | 19207 | SCREW,CAP,HEXAGON HEAD:BEARING COVER, COUNTERSHAFT | EA | 1 |
| 6 | 6 | PAHZZ | 5305-00-071-2055 | MS90728-89 | 96906 | SCREW,CAP,HEXAGON HEAD;BEARING COVER, COUNTERSHAFT | EA | 2 |
| 6 | 7 | PAHZZ | 2520-00-752-1439 | 7521439 | 19207 | COVER,ACCESS:REAR BEARING,COUNTERSHAFT | EA | 1 |
| 6 | 8 | PAHZZ | 2520-00-752-1441 | 7521441 | 19207 | SHIM:REAR BEARING COVER (PART OF SET 5330-00-752-1437) | EA | 1 |
| 6 | 9 | PAHZZ | 2520-00-752-1446 | 7521446 | 19207 | SHIM:REAR BEARING COVER PART OF SET 5330-00-752-1437) | EA | 1 |
| 6 | 10 | PAHZZ | 5305-00-071-1785 | MS90728-84 | 96906 | SCREW,CAP,HEXAGON HEAD:COVER BEARING,INPUT SHAFT | EA | 6 |
| 6 | 11 | PAHZZ | 2520-00-752-1585 | 7521585 | 19207 | COVER:REAR BEARING,INPUT SHAFT | EA | 1 |
| 6 | 12 | PAHZZ | 5330-00-585-7502 | 8344200-1 | 19207 | GASKET:REAR BEARING COVER,INPUT SHAFT (PART OF SET 5330-00-752-1437) | EA | 1 |
| 6 | 13 | PAHZZ | 5340-00-752-1372 | 7521372 | 19207 | PLUG EXPANSION:SHIFTER SHAFT | EA | 1 |
| 6 | 14 | PAHZZ | 4820-00-808-7442 | 11621193 | 19207 | VALVE,DIAPHRAM:HOUSING | EA | 1 |
| 6 | 15 | XAHZZ | | 11621147 | 19207 | HOUSING:TRANSFER CASE AND COVER ASSEMBLY | EA | 1 |
| 6 | 16 | PAFZZ | 5330-00-311-7774 | 7971280 | 19207 | GASKET:TOP ACCESS COVER (PART OF SET 5330-00-752-1437) | EA | 1 |
| 6 | 17 | PAFZZ | 2520-00-692-5753 | 7735641 | 19207 | COVER:TRANSFER CASE,TOP ACCESS | EA | 1 |
| 6 | 18 | PAOZZ | 4820-00-726-4719 | 5196397 | 19207 | VALVE,AIR PRESSURE,ASSEMBLY:BREATHER TRANSFER CASE | EA | 1 |
| 6 | 19 | PAFZZ | 5305-00-543-4372 | MS90728-58 | 96906 | SCREW,CAP,HEXAGON HEAD:TOP COVER | EA | 4 |
| 6 | 20 | KFHZZ | | 7521364 | 19207 | GASKET:TRANSFER CASE HOUSING (PART OF SET 5330-00-752-1437) | EA | 1 |
| 6 | 21 | PAHZZ | 2520-00-781-6264 | 8675959 | 19207 | COVER,TRANSFER,TRANSMISSION:FRONT | EA | 1 |
| 6 | 22 | PAHZZ | 5305-00-071-1789 | MS90728-88 | 96906 | SCREW,CAP,HEXAGON HEAD:TRANSFER COVER,FRONT | EA | 22 |
| 6 | 23 | PAHZZ | | 10938287 | 19207 | SEAL,PLAIN,ENCASED:SHIFTER SHAFT | EA | 1 |
| 6 | 24 | PAHZZ | 5305-00-139-4620 | 11609328-2 | 19207 | SCREW,CAP,HEXAGON HEAD:FRONT COVER | EA | 12 |
| 6 | 25 | PAOZZ | 4730-00-737-5249 | 7375249 | 19207 | PLUG,PIPE,MAGNETIC:HOUSING | EA | 1 |
| 6 | 26 | PAHZZ | 5310-00-880-7745 | MS51968-11 | 96906 | NUT,PLAIN,HEXAGON:HOUSING FRONT COVER | EA | 21 |
| 6 | 27 | PAHZZ | 5315-00-699-8460 | 7521237 | 19207 | PIN,STRAIGHT,HEADLESS:BEARING RETAINER, REAR INPUT SHAFT | EA | 1 |
| 6 | 28 | PAOZZ | 4730-00-044-4655 | 444655 | 19207 | PLUG,PIPE:HOUSING | EA | 1 |
| 6 | 29 | KFHZZ | 5365-00-752-1277 | 7521277 | 19207 | SHIM:REAR BEARING RETAINING (PART OF SET 5330-00-752-1437) | EA | V |
| 6 | 30 | PAHZZ | 5330-00-143-8666 | 7521241 | 19207 | SEAL,PLAIN,ENCASED,OUTPUT SHAFT | EA | 1 |
| 6 | 31 | PAHZZ | 2520-00-024-6540 | 7521275 | 19207 | CAP,REAR,BEARING:RETAINER | EA | 1 |
| 7 | 1 | KFHZZ | | 7521230 | 19207 | GASKET,COVER:FRONT PUTPUT DRIVE CASE (PART OF SET 5330-00-752-1437) | EA | 1 |
| 7 | 2 | XAHZZ | | 10948109 | 19207 | CASE FRONT DRIVE OUTPUT:TRANSFER CASE F | EA | 1 |
| 7 | 3 | PAOZZ | 4730-00-737-5248 | 8757704 | 19207 | PLUG,PIPE:FILLER,HOUSING,OUTPUT SHAFT | EA | 1 |
| 7 | 4 | XAHZZ | | 8757713 | 19207 | CASE FRONT DRIVE,OUTPUT E | EA | 1 |

| (1) | (2) | (3) | (4) | (5) | (6) | (7) | (8) |
|--------------|------|-------|------------------|-------------|-------------------------------|--|-------|
| ILLUSTRATION | | | | | | | |
| (a) | (b) | SMR | NATIONAL | PART | FSCM | DESCRIPTION | QTY. |
| FIG. | ITEM | CODE | STOCK | NUMBER | | | INC. |
| NO. | NO. | | NUMBER | | USABLE ON CODE | | IN |
| | | | | | | U/M | UNIT |
| | | | | | 0801-POWER TRANSFER-CONTINUED | | |
| 7 | 5 | PAHZZ | 5330-00-579-8156 | MS28775-212 | 96906 | SEAL:SHIFTER SHAFT E | EA 1 |
| 7 | 6 | PAHZZ | 5330-00-285-5121 | 5164515 | 19207 | WASHER, NON-METALLIC:SHIFTER SHAFT E | EA 1 |
| 7 | 7 | PAHZZ | 5330-00-353-2465 | 7702649 | 19207 | RETAINER, PACKING:SHIFTER SHAFT E | EA 1 |
| 7 | 8 | KPHZZ | | 7521574 | 19207 | GASKET:FRONT BEARING RETAINER (PART OF SET 5330-00-752-1437) | EA 1 |
| 7 | 9 | PAHZZ | 2520-00-692-6091 | 7521573 | 19207 | RETAINER, TRANSFER BEARING ASSEMBLY:FRONT BEARING, INPUT SHAFT | EA 1 |
| 7 | 10 | PAHZZ | 5330-00-143-8666 | 7521241 | 19207 | SEAL, OIL, FRONT BEARING, INPUT SHAFT | EA 1 |
| 7 | 11 | PAHZZ | 2520-00-781-6265 | 7700135 | 19207 | RETAINER, TRANSFER BEARING:FRONT BEARING, OUTPUT SHAFT | EA 1 |
| 7 | 12 | PAHZZ | 2520-00-752-1276 | 7521276 | 19207 | FLANGE, COMPANION W/DEFLECTOR ASSEMBLY:INPUT SHAFT(1) OUTPUT SHAFT(1) | EA 2 |
| 7 | 13 | PAHZZ | 2520-00-692-6080 | 7521242 | 19207 | DEFLECTOR:DIRT AND DUST COMPANION FLANGE | EA 1 |
| 7 | 14 | PAHZZ | 2520-00-134-5124 | 8757674 | 19207 | FLANGE, DIFFERENTIAL:COMPANION FLANGE | EA 1 |
| 7 | 15 | PAHZZ | 5315-00-013-7214 | MS24665-359 | 96906 | PIN, COTTER:NUT RETAINING, INPUT AND OUTPUT SHAFTS | EA 2 |
| 7 | 16 | PAHZZ | 5310-00-752-1234 | 7521234 | 19207 | NUT, SLOTTED HEXAGON:FLANGE INPUT AND OUTPUT SHAFTS | EA 2 |
| 7 | 17 | PAHZZ | 5310-00-752-1235 | 7521235 | 19207 | WASHER, FLAT:FLANGE | EA 2 |
| 7 | 18 | PAHZZ | 5305-00-071-1788 | MS90728-87 | 96906 | SCREW, CAP, HEXAGON:RETAINER AND GEAR COVER | EA 15 |
| 7 | 19 | PAHZZ | 5310-00-209-0965 | MS35338-47 | 96906 | WASHER, LOCK:BEARING RETAINER AND GEAR COVER | EA 19 |
| 8 | 1 | PAHZZ | 5365-00-752-1584 | 7521584 | 96906 | RING, RETAINING:REAR BEARING, INPUT SHAFT | EA 1 |
| 8 | 2 | PAHZZ | | 713925 | 21450 | BEARING, BALL, ANNULAR:REAR, INPUT SHAFT, TRANSFER GEARS | EA 1 |
| 8 | 3 | PAHZZ | 3120-00-752-1583 | 7521583 | 19207 | BEARING WASHER, THRUST:GEAR, HELICAL, INPUT SHAFT | EA 2 |
| 8 | 4 | PAHZZ | 3020-00-786-0211 | 7363017 | 19207 | GEAR, HELICAL:TRANSFER INPUT SHAFT | EA 1 |
| 8 | 5 | PAHZZ | 3110-00-554-3078 | 700603 | 21450 | BEARING, BALL, ANNULAR:TRANSFER GEARS, INPUT SHAFT | EA 4 |
| 8 | 6 | PAHZZ | 5365-00-752-1575 | 7521575 | 19207 | SPACER, SLEEVE:TRANSFER GEAR BEARINGS, INPUT SHAFT | EA 1 |
| 8 | 7 | PAHZZ | 3040-00-808-7441 | 11621145 | 19207 | SHAFT, SHOULDERED:INPUT TRANSFER GEARS | EA 1 |
| 8 | 8 | PAHZZ | 2520-00-752-1385 | 7521385 | 19207 | SHAFT:SHIFTER, LOW RANGE | EA 1 |
| 8 | 9 | PAHZZ | 3110-00-100-6156 | MS19059-55 | 96906 | BALL, BEARING:TRANSFER GEARS, SHIFTER SHAFT | EA 1 |
| 8 | 10 | PAHZZ | 2520-00-514-3782 | 5143782 | 19207 | PLUNGER, SHIFTER SHAFT:TRANSFER GEARS | EA 1 |
| 8 | 11 | PAHZZ | 5360-00-692-6089 | 7521387 | 19207 | SPRING, HELICAL COMPRESSION:SHIFTER SHAFT | EA 1 |
| 8 | 12 | PAHZZ | 5305-00-695-7174 | 7521390 | 19207 | SETSCREWA:SHIFTER FORK | EA 1 |
| 8 | 13 | PAHZZ | 2520-00-786-0209 | 7363018 | 19207 | FORK, SHIFTER SHAFT:TRANSFER GEARS | EA 1 |
| 8 | 14 | PAHZZ | 2520-00-752-1581 | 7521581 | 19207 | SYNCHRONIZER ASSEMBLY:GEAR SHIFTING INPUT SHAFT | EA 1 |
| 8 | 15 | PAHZZ | 3120-00-753-9011 | 7539011 | 19207 | SPACER, WASHER, THRUST:GEAR, HELICAL | EA 1 |
| 8 | 16 | PAHZZ | 3030-00-786-0213 | 7363016 | 19207 | GEAR, HELICAL: INPUT SHAFT, LOW RANGE | EA 1 |
| 8 | 17 | PAHZZ | 3110-00-293-9305 | 700795 | 00000 | BEARING, BALL, ANNULAR:FRONT INPUT SHAFT | EA 1 |
| 8 | 18 | PAHZZ | 3120-00-752-1487 | 7521487 | 19207 | BEARING, WASHER, THRUST:FRONT, INPUT SHAFT | EA 1 |
| 8 | 19 | PAHZZ | 5305-00-071-1786 | MS90728-85 | 96906 | SCREW, CAP, HEXAGON HEAD:RETAINER DRIVE GEAR, COUN- TERSHAFT | EA 4 |
| 8 | 20 | PAHZZ | 5310-00-832-7904 | 8327904 | 19207 | LOCK ASSEMBLY:COUNTERSHAFT BEARING AND DRIVE GEAR RETAINER | EA 2 |
| 8 | 21 | PAHZZ | 2520-00-752-1373 | 7521373 | 19207 | PLATE:RETAINER, BEARING AND COUNTERSHAFT | EA 2 |

| (1) | (2) | (3) | (4) | (5) | (6) | (7) | (8) |
|--------------|------|-------|------------------|-------------|-------|---|------|
| ILLUSTRATION | | | | | | | QTY. |
| (a) | (b) | SMR | NATIONAL | PART | FSCM | DESCRIPTION | U/M |
| FIG. | ITEM | CODE | STOCK | NUMBER | | | INC. |
| NO. | NO. | | NUMBER | | | USABLE ON CODE | IN |
| | | | | | | | UNIT |
| | | | | | | 0801-POWER TRANSFER-CONTINUED | |
| 8 | 22 | PAHZZ | 3020-00-303-5106 | 7521438 | 19207 | GEAR, HELICAL; DRIVE, FRONT, COUNTERSHAFT E | EA 1 |
| 8 | 23 | PAHZZ | 5365-00-752-1374 | 7521374 | 19207 | RING, RETAINING: FRONT BEARING CUP, COUNTERSHAFT E | EA 1 |
| 8 | 24 | PAFZZ | 3110-00-013-7743 | 10948082 | 19207 | BEARING, CUP, CONE AND ROLLER, TAPERED: FRONT AND REAR, COUNTERSHAFT | EA 2 |
| 8 | 25 | PAFZZ | 3020-00-312-8348 | 7521376 | 19207 | GEAR, HELICAL: LOW RANGE, COUNTERSHAFT | EA 1 |
| 8 | 26 | PAFZZ | 5315-00-850-7038 | MS35756-105 | 96906 | KEY, WOODRUFF: COUNTERSHAFT | EA 2 |
| 8 | 27 | PAFZZ | 2520-00-752-1340 | 7521340 | 19207 | COUNTERSHAFT: TRANSFER E | EA 1 |
| 8 | 28 | PAFZZ | 3040-00-808-7448 | 11621191 | 19207 | SHAFT SHOULDERED: TRANSFER COUNTERSHAFT F | EA 1 |
| 8 | NI | PAFZZ | 3020-00-692-6084 | 7521375 | 19207 | GEAR, HELICAL: HIGH RANGE COUNTERSHAFT | EA 1 |
| 8 | NI | PAHZZ | 5365-00-808-7423 | 10948103 | 19207 | SPACER, SLEEVE: COUNTERSHAFT STEEL TUBE F | EA 1 |
| 8 | NI | PAHZZ | | 10924755 | 19207 | RETAINER: COUNTERSHAFT F | EA 1 |
| 9 | 1 | PAHZZ | 3110-00-165-6329 | 10948080 | 19207 | BEARING ASSEMBLY ROLLER: REAR OUTPUT | EA 1 |
| 9 | 2 | PAHZZ | 3020-00-312-8350 | 7521240 | 19207 | GEAR, HELICAL: DRIVEN, OUTPUT SHAFT, REAR | EA 1 |
| 9 | 3 | PAHZZ | 5315-00-850-7038 | MS35756-105 | 96906 | KEY, WOODRUFF: OUTPUT SHAFT, REAR | EA 1 |
| 9 | 4 | PAHZZ | 2520-00-301-7734 | 8376462 | 19207 | SHAFT, SHOULDERED, OUTPUT SHAFT, REAR E | EA 1 |
| 9 | 5 | PAHZZ | 3110-00-101-6480 | 712663 | 00000 | BEARING, ROLLER: REAR OUTPUT SHAFT FRONT | EA 1 |
| 9 | 6 | PAHZZ | 5365-00-696-0268 | 7521434 | 19207 | RING, RETAINING: FRONT BEARING CUP, REAR OUTPUT SHAFT | EA 1 |
| 9 | 7 | PAHZZ | 2520-00-737-2011 | 7372011 | 19207 | SHAFT, OUTPUT, FRONT E | EA 1 |
| 9 | 8 | PAHZZ | 5315-00-281-7939 | 8329891 | 19207 | KEY, WOODRUFF: OUTPUT SHAFT, FRONT E | EA 1 |
| 9 | 9 | PAHZZ | 2520-00-737-2012 | 7372012 | 19207 | GEAR, TRANSMISSION: DRIVEN, OUTPUT SHAFT, FRONT E | EA 1 |
| 9 | 10 | PAHZZ | 2520-00-737-2010 | 7372010 | 19207 | COLLAR, TRANSMISSION: CLUTCH, SHIFT E OUTPUT SHAFT | EA 1 |
| 9 | 11 | PAHZZ | 2520-00-737-1995 | 7371995 | 19207 | SHIFTER FORK: DE-CLUTCH SHAFT E | EA 1 |
| 9 | 12 | PAHZZ | 5305-00-752-1391 | 7521391 | 19207 | SETSCREW: FORK SHIFTER | EA 1 |
| 9 | 13 | PAHZZ | 2520-00-752-1341 | 7521341 | 19207 | SHAFT: SHIFTER, REVERSE E | EA 1 |
| 9 | 14 | PAHZZ | 5360-00-737-2020 | 7372020 | 19207 | SPRING, RETAINING: OIL SEAL AND BEARING E FRONT OUTPUT SHAFT | EA 1 |
| 9 | 15 | PAHZZ | 2520-00-513-5811 | 8329892 | 19207 | CLUTCH ASSEMBLY: SPRAG UNIT E | EA 1 |
| 9 | 16 | PAHZZ | | 8329893 | 19207 | WASHER, FLAT, INNER RACE, SPRAG UNIT E | EA 1 |
| 9 | 17 | PAHZZ | 5365-00-696-0267 | 7521433 | 19207 | RING, RETAINING: OIL SEAL AND BEARING FRONT OUTPUT SHAFT | EA 3 |
| 9 | 18 | PAHZZ | 3110-00-516-5491 | ST202 | 31007 | BEARING, BALL, ANNULAR: FRONT OUTPUT SHAFT | EA 1 |
| 9 | 219 | PAHZZ | 3120-00-752-1487 | 7521487 | 19207 | BEARING, WASHER, THRUST: FRONT OUTPUT SHAFT | EA 1 |
| 10 | 1 | PAHZZ | 5305-00-071-2235 | MS90725-16 | 96906 | SCREW, CAP, HEXAGON HEAD: AIR CYLINDER COVER F | EA 4 |
| 10 | 2 | PAHZZ | 5310-00-145-2085 | 8327009 | 19207 | WASHER, KEY: AIR CYLINDER COVER SCREW F | EA 4 |
| 10 | 3 | PAHZZ | 2520-00-808-7445 | 10948042 | 19207 | COVER, AIR CYLINDER: SHIFTER SHAFT F | EA 1 |
| 10 | 4 | PAHZZ | 5365-00-832-7774 | 10913209 | 19207 | GASKET: AIR CYLINDER TUBE F | EA 1 |
| 10 | 5 | PAHZZ | 3120-00-832-7334 | 8758292-2 | 19207 | BUSHING, SLEEVE: AIR CYLINDER F | EA 1 |
| 10 | 6 | PAHZZ | 5310-00-225-6993 | MS51922-33 | 96906 | NUT, SELF-LOCKING, HEXAGON: PISTON RETAINING, AIR CYLINDER F | EA 1 |
| 10 | 7 | PAHZZ | 5310-00-177-0973 | 11609221 | 19207 | WASHER, FLAT: PISTON RETAINING F | EA 1 |
| 10 | 8 | PAHZZ | 2520-00-832-8236 | 10948043 | 19207 | PISTON, TRANSFER: AIR CYLINDER F | EA 1 |

| (1) | (2) | (3) | (4) | (5) | (6) | (7) | (8) |
|--------------|------|-------|------------------|-------------|-------|--|------|
| ILLUSTRATION | | | | | | | QTY. |
| (a) | (b) | SMR | NATIONAL | PART | FSCM | DESCRIPTION | U/M |
| FIG. | ITEM | CODE | STOCK | NUMBER | | | INC. |
| NO. | NO. | | NUMBER | | | USABLE ON CODE | IN |
| | | | | | | | UNIT |
| | | | | | | 0801-POWER TRANSFER-CONTINUED | |
| 10 | 9 | PAHZZ | 2520-00-832-8235 | 8758294 | 19207 | SEAL,TRANSFER:PISTON,AIR CYLINDER F | EA 1 |
| 10 | 10 | PAHZZ | 5310-00-527-4222 | 8758299 | 19207 | WASHER,FLAT:SHAFT,AIR CYLINDER F | EA 1 |
| 10 | 11 | PAHZZ | 2520-00-832-8074 | 10948099 | 19207 | SHAFT,SHIFTER:CLUTCH,AIR CYLINDER F | EA 1 |
| 10 | 12 | PAHZZ | 9505-00-248-9850 | MS20995-47 | 96906 | WIRE,SAFETY:SHIFTER FORK SETSCREW F | FT V |
| 10 | 13 | PAHZZ | 5305-00-752-1391 | 7521391 | 19207 | SETSCREW:SHIFTER FORK | EA 1 |
| 10 | 14 | PAHZZ | 2520-00-832-8071 | 10948100 | 19207 | SHIFTER FORK:CLUTCH SHAFT,AIR CYLINDER F | EA 1 |
| 10 | 15 | PAHZZ | 2520-00-808-7428 | 10948108 | 19207 | SEAT,HELICAL SPRING:SHIFTER SHAFT AIR CYLINDER F | EA 2 |
| 10 | 16 | PAHZZ | 5360-00-832-8072 | 10945186 | 19207 | SPRING,HELICAL COMPRESSION:SHIFTER SHAFT, F | EA 1 |
| | | | | | | AIR CYLINDER | |
| 10 | 17 | PAHZZ | 3110-00-165-6329 | 10948080 | 19207 | BEARING,ROLLER,TAPERED:REAR OUTPUT SHAFT | EA 1 |
| 10 | 18 | PAHZZ | 5315-00-850-7038 | MS35756-105 | 96906 | KEY.WOODRUFF:REAR OUTPUT SHAFT | EA 1 |
| 10 | 19 | PAHZZ | 2520-00-832-7794 | 10937638 | 19207 | SHAFT,REAR AXLE:REAR OUTPUT F | EA 1 |
| 10 | 20 | PAHZZ | 2520-00-832-8075 | 10948101 | 19207 | SHAFT,AXLE,AUTOMOTIVE:FRONT OUTPUT F | EA 1 |
| 10 | 21 | PAHZZ | 3110-00-101-6480 | 712663 | 00000 | BEARING,ROLLER,TAPERED:FRONT OUTPUT SHAFT | EA 1 |
| 10 | 22 | PAHZZ | 5305-00-165-8248 | 10937391 | 19207 | SETSCREW:CLUTCH,DRIVING,OUTPUT SHAFT F | EA 1 |
| 10 | 23 | PAHZZ | 2520-00-832-8237 | 10948106 | 19207 | CLUTCH,DRIVING,FRONT:OUTPUT SHAFT F | EA 1 |
| 10 | 24 | PAHZZ | 2520-00-808-7424 | 10948105 | 19207 | CLUTCH,SLIDING,SLEEVE:OUTPUT SHAFT F | EA 1 |
| 10 | 25 | PAHZZ | 5365-00-696-0267 | 7521433 | 19207 | RING,RETAINING:OIL SEAL AND BEARING | EA 3 |
| 10 | 26 | PAHZZ | 3110-00-516-5491 | ST202 | 31007 | BEARING,BALL,ANNULAR:FRONT OUTPUT SHAFT | EA 1 |
| 10 | 27 | PAHZZ | 3120-00-752-1487 | 7521487 | 19207 | BEARING,WASHER,THRUST:FRONT OUTPUT SHAFT | EA 1 |
| 10 | 28 | PAHZZ | 5330-00-143-8666 | 7521241 | 19207 | SEAL,PLAIN ENCASED:FRONT OUTPUT SHAFT | EA 1 |
| | | PAHZZ | 5330-00-752-1437 | 7521437 | 19207 | GASKET AND SHIM SET POWER TRANSFER | EA 1 |
| 10 | 29 | PAHZZ | 2520-00-394-9718 | 5704159 | 19207 | KIT,TRANSFER:AIR CYLINDER | EA 1 |
| 6 | 8 | | | | | SHIM:REAR BEARING COVER | EA 1 |
| 6 | 9 | | | | | SHIM:REAR BEARING COVER | EA 1 |
| 6 | 12 | | | | | GASKET:REAR BEARING COVER | EA 1 |
| 6 | 16 | | | | | GASKET:TOP ACCESS COVER | EA 1 |
| 6 | 20 | | | | | GASKET:HOUSING | EA 1 |
| 6 | 29 | | | | | SHIM:REAR BEARING RETAINER | EA 1 |
| 7 | 1 | | | | | GASKET:COVER,TRANSFER CASE | EA 1 |
| 7 | 8 | | | | | GASKET:FRONT,BEARING RETAINER | EA 1 |
| | | | | | | GROUP 12 BRAKES | |
| | | | | | | 1201-PARKING BRAKE DRUM AND SHOES | |
| | | | | | | AND RELATED PARTS | |
| 11 | 1 | PAOZZ | 5306-00-752-1014 | 7521014 | 19207 | BOLT,RIBBED NECK:PARKING BRAKE DRUM | EA 4 |
| 11 | 2 | PAOZZ | 2530-00-752-1490 | 7521490 | 19207 | BRAKEDRUM:PARKING BRAKE | EA 1 |
| 11 | 3 | XBFZZ | 2530-00-622-3949 | 7397808 | 19207 | BRACKET:BRAKE CABLE | EA 1 |
| 11 | 4 | PAFZZ | 5310-00-514-6674 | MS35335-34 | 96906 | WASHER,LOCK,EXTERNAL TOOTH:SHOE STOP BRACKET | EA 1 |
| 11 | 5 | PAFZZ | 5306-00-089-3837 | 8757599 | 19207 | BOLT,MACHINE:BRAKE CABLE BRACKET | EA 1 |
| 11 | 6 | PAOZZ | 5305-00-071-1788 | MS90728-87 | 96906 | SCREW,CAP,HEXHEAD | |
| 11 | 7 | PAOZZ | 5310-00-209-0965 | MS35338-47 | 19207 | WASHER,LOCK SPLIT:SHOE STOP BRACKET(1) | EA 1 |
| 11 | 8 | XBOZZ | 2530-00-752-9383 | 8757711 | 19207 | SHIELD,GREASE:PARKING BRAKE DRUM | EA 1 |

| (1) | (2) | (3) | (4) | (5) | (6) | (7) | (8) | |
|--------------|------|-------|------------------|--------------|-------|--|-----|------|
| ILLUSTRATION | | | | | | | | |
| (a) | (b) | SMR | NATIONAL | PART | FSCM | DESCRIPTION | U/M | QTY. |
| FIG. | ITEM | CODE | STOCK | NUMBER | | | | INC. |
| NO. | NO. | | NUMBER | | | USABLE ON CODE | | IN |
| | | | | | | | | UNIT |
| | | | | | | 1201-PARKING BRAKE DRUM AND SHOES AND RELATED PARTS-CONTINUED | | |
| 11 | 9 | PAFZZ | 2520-00-752-1276 | 7521276 | 19207 | FLANGE,COMPANION W/DEFLECTOR ASSEMBLY: TRANSFER REAR SHAFT | EA | 1 |
| 11 | 10 | XAFZZ | | 7521242 | 19207 | DEFLECTOR,DIRT AND LIQUID:COMPANION FLANGE | EA | 1 |
| 11 | 11 | PAOZZ | 2520-00-134-5124 | 8757674 | 19207 | FLANGE,COMPANION:BRAKE DRUM | EA | 1 |
| 11 | 12 | PAOZZ | 5310-00-584-5272 | MS35338-10 | 96906 | WASHER,LOCK:PARKING BRAKE DRUM | EA | 4 |
| 11 | 13 | PAOZZ | 5310-00-732-0560 | MS51968-14 | 96906 | NUT,HEXAGON:PARKING BRAKE DRUM | EA | 4 |
| 11 | 14 | PAOZZ | 5315-00-013-7214 | MS34665-359 | 96906 | PIN,COTTER,SPLIT:BRAKE DRUM FLANGE | EA | 1 |
| 11 | 15 | PAOZZ | 5310-00-752-1234 | 7521234 | 19207 | NUT,SLOTTED,HEX HEAD:BRAKE DRUM FLANGE | EA | 1 |
| 11 | 16 | PAOZZ | 5310-00-752-1235 | 7521235 | 19207 | WASHER,FLAT:BRAKE DRUM FLANGE | EA | 1 |
| 11 | 17 | PAOZZ | 5360-00-693-0615 | 7521284 | 19207 | SPRING,HELICAL,EXTENSION:BRAKE SHOE ADJUSTING ANGLE RETURN | EA | 1 |
| 11 | 18 | PAFZZ | 5310-00-926-5916 | MS51968-12 | 96906 | NUT,PLAIN,HEX:BRAKESHOE ADJUSTING SPRING SCREW | EA | 1 |
| 11 | 19 | XBFZZ | 2530-00-752-1488 | 7521488 | 19207 | BRACKET,ANGLE:BRAKESHOE ADJUSTING | EA | 1 |
| 11 | 20 | PAFZZ | 5305-00-139-4620 | 11609328-2 | 19207 | SCREW,CAP,HEX HEAD:BRAKESHOE ADJUSTING RETURN SPRING | EA | 1 |
| 11 | 21 | PAFZZ | 5305-00-165-9250 | 11609328-1 | 19207 | SCREW:BRAKESHOE ADJUSTING ANGLE | EA | 1 |
| 11 | 22 | PAFZZ | 5305-00-071-1789 | MS90728-87 | 96906 | SCREW:BRAKESHOE ADJUSTING ANGLE | EA | 1 |
| 11 | 23 | PAOFF | 2530-00-693-0680 | 8380559 | 19207 | BRAKESHOE: ASSEMBLY: OUTER PARKING, W/LINING | EA | 1 |
| 11 | 24 | PAFZZ | 5320-00-443-5065 | 10896748 | 19207 | RIVET,TUBULAR:BRAKESHOE LINING | EA | 8 |
| 11 | 25 | PAFZZ | 2530-00-289-7207 | 7368681 | 19207 | LINING,FRICTION:BRAKESHOE,PARKING,INNER | EA | 1 |
| 11 | 26 | XAFZZ | | 8757706 | 19207 | SHOE,BRAKE: OUTER, PARKING | EA | 1 |
| 11 | 27 | PAOZZ | 4730-00-050-4208 | MS15003-1 | 96906 | FITTING,LUBRICATION: INNER AND OUTER BRAKESHOE | EA | 2 |
| 11 | 28 | PAOZZ | 5310-00-333-7519 | 7064468 | 19207 | WASHER,SLOTTED:BRAKE PIN | EA | 2 |
| 11 | 29 | PAOFF | 2530-00-693-0679 | 8380558 | 19207 | BRAKESHOE ASSEMBLY: INNER PARKING, W/LINING | EA | 1 |
| 11 | 30 | XAFZZ | | 8757707 | 19207 | SHOE,BRAKE: INNER, PARKING | EA | 1 |
| 11 | 31 | PAFZZ | 2530-00-736-8682 | 7368682 | 19207 | LINING,FRICTION:BRAKESHOE,PARKING,INNER | EA | 1 |
| 11 | 32 | PAFZZ | 5320-00-443-5065 | 10896748 | 19207 | RIVET,TUBULAR:BRAKESHOE LINING | EA | 8 |
| 11 | 33 | PAOZZ | 5315-00-316-0992 | 7064470 | 19207 | PIN,SHOULDER,HEADLESS: INNER BRAKESHOE | EA | 1 |
| 11 | 34 | PAOZZ | 5360-00-342-7071 | 7373243 | 19207 | SPRING,HELICAL,EXTENSION:LEVER RETURN | EA | 1 |
| 11 | 35 | PAOFF | 2530-00-736-8683 | 7368683 | 19207 | LEVER AND PIN ASSEMBLY: PARKING BRAKE ACTUATING | EA | 1 |
| 11 | 36 | XAFZZ | | 8757709 | 19207 | LEVER: PARKING BRAKE | EA | 1 |
| 11 | 37 | PAFZZ | 5315-00-312-0831 | 7521448 | 19207 | PIN,GROOVED,HEADLESS: PARKING BRAKE LEVER | EA | 2 |
| 11 | 38 | PAOZZ | 5365-00-664-2779 | MS16633-1098 | 96906 | WASHER,RETAINING LEVER PIN | EA | 2 |
| 11 | 39 | PAOZZ | 5340-00-321-6375 | 7064466 | 19207 | SPRING:STABILIZER,BRAKESHOE | EA | 1 |
| 11 | 40 | PAOZZ | 5310-00-279-3314 | 7064467 | 19207 | WASHER,FLAT:BRAKE SPACER TIE RING | EA | 4 |
| 11 | 41 | PAOZZ | 5305-00-206-0932 | 7064469 | 19207 | SCREW,SHOULDER: OUTER BRAKESHOE STABILIZER | EA | 1 |
| 11 | 42 | PAOZZ | 5306-00-312-0845 | 7521283 | 9207 | BOLT,MACHINE: ANCHOR, OUTER BRAKESHOE | EA | 1 |
| 11 | 43 | XBOZZ | | 8757705 | 19207 | WASHER FLAT: BRAKESHOE ANCHOR BOLT | EA | 1 |
| 11 | 44 | PAOZZ | 5310-00-753-9169 | 7539169 | 19207 | NUT,PLAIN,HEX: BRAKESHOE ANCHOR BOLT | EA | 1 |
| 11 | 45 | PAOZZ | 5310-00-637-9541 | MS122036 | 96906 | WASHER,LOCK,SPLIT: BRAKESHOE STABILIZER SCREW | EA | 1 |
| 11 | 46 | PAOZZ | 5310-00-732-0558 | MS51967-8 | 96906 | NUT,PLAIN,HEX: BRAKESHOE STABILIZER SCREW | EA | 1 |
| 11 | 47 | PAFZZ | 5310-00-209-0965 | MS35338-47 | 96906 | WASHER,LOCK:SPLIT HELICAL | EA | 2 |

| (1) | (2) | (3) | (4) | (5) | (6) | (7) | (8) | |
|--------------|------|-------|------------------|-------------|-------|---|------|------|
| ILLUSTRATION | | | | | | | QTY. | |
| (a) | (b) | SMR | NATIONAL | PART | FSCM | DESCRIPTION | U/M | INC. |
| FIG. | ITEM | CODE | STOCK | NUMBER | | | | IN |
| NO. | NO. | | NUMBER | | | USABLE ON CODE | | UNIT |
| | | | | | | GROUP 20-POWER TAKE-OFF | | |
| | | | | | | 2004-POWER TAKE-OFF ASSEMBLY | | |
| 12 | 1 | PAFHH | 2520-00-706-1136 | 7061136 | 19207 | POWER TAKE-OFF TRANSMISSION:WITH ACCESSORY DRIVE, C SPICER MODEL WND-7-28 (P2) | EA | 1 |
| 12 | 2 | PAFHH | 2520-00-706-1137 | 7061137 | 19207 | POWER TAKE-OFF TRANSMISSION:SPICER MODEL D WN-7-28- (P1) | EA | 1 |
| 12 | 3 | PAHZZ | 5306-00-404-0075 | 8344155 | 19207 | BOLT,MACHINE:SHIFTER FORK,REVERSE GEAR SHAFT | EA | 1 |
| 12 | 4 | PAHZZ | 2520-00-706-1273 | 7061273 | 19207 | SHIFTER FORK:SHAFT,REVERSE GEAR | EA | 1 |
| 12 | 5 | PAHZZ | 3110-00-902-1686 | 713421 | 00000 | BEARING,ROLLER,NEEDLE:REVERSE GEAR SHAFT,FRONT | EA | 1 |
| 12 | 6 | PAHZZ | 3040-00-706-1159 | 7061159 | 19207 | SHAFT ASSEMBLY POWER TAKE-OFF:REVERSE GEAR | EA | 1 |
| 12 | 7 | XAHZZ | | 8743044 | 19207 | SHAFT:REVERSE GEAR | EA | 1 |
| 12 | 8 | PAHZZ | 5315-00-058-8581 | MS35756-109 | 96906 | KEY,WOODRUFF:SHAFT,REVERSE GEAR | EA | 1 |
| 12 | 9 | PAHZZ | 3120-00-737-3115 | 7373115 | 19207 | BEARING,SLEEVE:REVERSE GEAR SHAFT | EA | 1 |
| 12 | 10 | PAHZZ | 5365-00-706-1276 | 7061276 | 19207 | RING,RETAINING:DRIVE CLUTCH GEAR | EA | 1 |
| 12 | 11 | PAHZZ | 5306-00-225-8494 | MS90725-31 | 96906 | BOLT:SHIFTER SHAFT | EA | 1 |
| 12 | 12 | PAHZZ | 5310-00-080-6004 | MS27183-14 | 96906 | WASHER:BOLT,SHIFTER SHAFT | EA | 2 |
| 12 | 13 | PAHZZ | 2520-00-706-1278 | 7061278 | 19207 | BOOT,BELLOWS,RUBBER:SHIFTER SHAFT | EA | 2 |
| 12 | 14 | PAHZZ | 5330-00-737-6534 | 7376534 | 19207 | CUP RETAINING:TO ATTACH SHIFTER SHAFT BOOT D | EA | 2 |
| 12 | 14 | PAHZZ | 5305-00-737-6534 | 7376534 | 19207 | CUP RETAINING:TO ATTACH SHIFTER SHAFT BOOT C | EA | 3 |
| 12 | 15 | PAHZZ | 5330-00-298-3947 | 7061272 | 19207 | SEAL,SHIFTER:FORK ROD D | EA | 2 |
| 12 | 15 | PAHZZ | 5330-00-298-3947 | 7061272 | 19207 | SEAL,SHIFTER:FORK ROD C | EA | 3 |
| 12 | 16 | PAHZZ | 4730-00-012-5947 | 125947 | 21450 | PLUG,HOUSING | EA | 1 |
| 12 | 17 | PAHZZ | 2520-00-706-1160 | 7061160 | 19207 | CASE,HOUSING:POWER TAKE-OFF | EA | 1 |
| 12 | 18 | PAHZZ | 3110-00-887-5524 | MS19061-15 | 96906 | BALL,BEARING:LOCK,SHIFTER SHAFT | EA | 1 |
| 12 | 19 | PAHZZ | 2520-00-522-6128 | 5226128 | 19207 | SPRING,HELICAL COMPRESSION:SHIFTER SHAFT LOCKING | EA | 1 |
| 12 | 20 | PFHZZ | 2520-00-104-4603 | 5226140 | 19207 | RETAINER,POPPET:SHIFTER SHAFT LOCKING | EA | 1 |
| 12 | 21 | PAHZZ | 2520-00-706-1281 | 7061281 | 19207 | WASHER,THRUST:REVERSE SHAFT GEAR | EA | 2 |
| 12 | 22 | PAHZZ | 2520-00-706-1275 | 7061275 | 19207 | GEAR,REVERSE SHAFT:POWER TAKE-OFF | EA | 1 |
| 12 | 23 | PAHZZ | 5315-00-816-1794 | MS24665-285 | 96906 | PIN,COTTER:LOCKING PIN | EA | 1 |
| 12 | 24 | PAHZZ | 5315-00-735-1406 | 7351406 | 19207 | PIN,STRAIGHT HEADED:REVERSE GEAR SHAFT | EA | 1 |
| 12 | 25 | PAHZZ | 5305-00-144-1495 | 10910354 | 19207 | SCREW:COVER,ACCESS | EA | 6 |
| 12 | 26 | PAHZZ | 5310-00-616-7998 | MS35335-31 | 96906 | WASHER,LOCK:COVER ACCESS | EA | 6 |
| 12 | 27 | PAHZZ | 2520-00-354-0771 | 5323473 | 19207 | COVER,ACCESS:HOUSING CASE | EA | 1 |
| 12 | 28 | PAHZZ | 5330-00-234-3317 | 8327322 | 19207 | GASKET:CASE AND COVER | EA | 2 |
| 12 | 29 | PAHZZ | 2520-00-706-1267 | 7061267 | 19207 | SHAFT,POWER TAKE-OFF:SHIFTER | EA | 1 |
| 12 | 30 | PAHZZ | 5310-00-975-2075 | MS35691-21 | 96906 | NUT,PLAIN,HEXAGON:SHIFTER SHAFT ROD END CONNECTOR | EA | 1 |
| 12 | 31 | PAHZZ | 5340-00-753-8679 | 7538679 | 19207 | CONNECTOR,ROD END:SHIFTER SHAFT | EA | 1 |
| 12 | 32 | PAHZZ | 2520-00-706-1269 | 7061269 | 19207 | CAP,OUTPUT SHAFT:REAR BEARING D | EA | 1 |
| 12 | 33 | PAHZZ | 3110-00-183-6723 | MS17131-35 | 96906 | BEARING,ROLLER,NEEDLE:GEAR SHAFT,ACCESSORY DRIVR | EA | 1 |
| 12 | 34 | PAHZZ | 5310-00-732-0559 | MS51968-8 | 96906 | NUT,PLAIN,HEXAGON:POWER TAKE-OFF MOUNTING | EA | 6 |
| 12 | 35 | PAHZZ | 5310-00-637-9541 | MS122036 | 96906 | WASHER,LOCK:POWER TAKE-OFF MOUNTING | EA | 6 |
| 12 | 36 | PAHZZ | 5315-00-013-7258 | MS24665-497 | 96906 | PIN,COTTER:HOUSING | EA | 1 |
| 12 | 37 | PAHZZ | 5307-00-753-8668 | 7538668 | 19507 | STUD,PLAIN:POWER TAKE-OFF MOUNTING | EA | 6 |
| 12 | 38 | PAHZZ | 2520-00-706-1266 | 7061266 | 19207 | SHAFT,SHOULDERED:INOUT GEAR CLUSTER | EA | 1 |

| (1) | (2) | (3) | (4) | (5) | (6) | (7) | (8) |
|--------------|------|-------|------------------|------------|-------|---|------|
| ILLUSTRATION | | | | | | | QTY. |
| (a) | (b) | SMR | NATIONAL | PART | FSCM | DESCRIPTION | U/M |
| FIG. | ITEM | CODE | STOCK | NUMBER | | | INC. |
| NO. | NO. | | NUMBER | | | USABLE ON CODE | IN |
| | | | | | | | UNIT |
| | | | | | | 2004-POWER TAKE-OFF ASSEMBLY-CONTINUED | |
| 12 | 39 | PAHZZ | 2520-00-706-1265 | 7061265 | 19207 | SPACER POWER TAKE-OFF:OUTPUT SHAFT | EA 1 |
| 12 | 40 | PAHZZ | 3110-00-516-5490 | 7539700 | 19207 | BEARING,BALL,ANNULAR:OUTPUT SHAFT REAR | EA 1 |
| 12 | 41 | PAHZZ | 5365-00-508-4691 | 7538660 | 19207 | RING,RETAINING:OUTPUT SHAFT GEAR | EA 1 |
| 12 | 42 | PAHZZ | 3120-00-753-8661 | 7538661 | 19207 | WASHER,THRUST:OUTPUT SHAFT HELICAL GEAR | EA 1 |
| 12 | 43 | PAHZZ | 3020-00-347-4549 | 7538672 | 19207 | GEAR,HELICAL:OUTPUT SHAFT | EA 1 |
| 12 | 44 | PAHZZ | 3020-00-318-0908 | 7538671 | 19207 | GEAR,SPUR:OUTPUT SHAFT | EA 1 |
| 12 | 45 | PAHZZ | 2520-00-753-8673 | 7538673 | 19207 | SHAFT,OUTPUT | EA 1 |
| 12 | 46 | PAHZZ | 5315-00-616-5527 | MS35756-18 | 96906 | KEY:OUTPUT SHAFT (1) ACCESSORY DRIVE SHAFT(1) | EA 2 |
| 12 | 47 | PAHZZ | 3110-00-156-4704 | 714248 | 00000 | BEARING,BALL,ANNULAR:FRONT,OUTPUT SHAFT | EA 1 |
| 12 | 48 | PAHZZ | 5330-00-532-3606 | 5323606 | 19207 | GASKET:OUTPUT SHAFT FRONT BEARING RETAINER | EA 1 |
| 12 | 50 | PAHZZ | 2540-00-626-2467 | 6262467 | 19207 | CAP:OUTPUT SHAFT FRONT BEARING | EA 1 |
| 12 | 51 | PAHZZ | 5306-00-238-5605 | 878355 | 19207 | SCREW,CAP,HEXAGON HEAD:OUTPUT SHAFT FRONT BEARING | EA 9 |
| | | | | | | RETAINER(4),ACCESSORY DRIVE HOUSING(5) | |
| 12 | 52 | PAHZZ | 5310-00-514-6674 | MS35335-20 | 96906 | WASHER,LOCK:OUTPUT SHAFT FRONT BEARING RETAINER(4), ACCESSORY DRIVE HOUSING(5) | EA 9 |
| 12 | 53 | PAHZZ | 3120-00-753-8656 | 7538656 | 19207 | WASHER:INPUT SHAFT GEAR | EA 2 |
| 12 | 54 | PAHZZ | 2520-00-347-4571 | 7538674 | 19207 | GEAR CLUSTER,HELICAL:INPUT SHAFT | EA 1 |
| 12 | 55 | PAHZZ | 3110-00-227-3074 | 7538658 | 19207 | ROLLER ASSEMBLY:INPUT GEAR SHAFT D | EA 2 |
| 12 | 56 | PAHZZ | | 7521058 | 19207 | SCREW:SHIFTER FORK C | EA 1 |
| 12 | 57 | PAHZZ | 2520-00-706-1274 | 7061274 | 19207 | SHIFTER FORK:ACCESSORY DRIVE C | EA 1 |
| 12 | 58 | PAHZZ | 2520-00-706-1268 | 7061268 | 19207 | SHAFT,STRAIGHT:ACCESSORY DRIVE SHIFTER C | EA 1 |
| 12 | 59 | PAHZZ | 5330-00-706-1270 | 7061270 | 19207 | GASKET:ACCESSORY DRIVE REAR OUTPUT COVER | EA 1 |
| 12 | 60 | XAHZZ | | 7061194 | 19207 | HOUSING:POWER TAKE-OFF ACCESSORY DRIVE C | EA 1 |
| 12 | 61 | PAHZZ | 5365-00-769-6481 | 7696481 | 19207 | PLUG,MACHINE THREADED:ACCESSORY DRIVE HOUSING C | EA 1 |
| 12 | 62 | PAHZZ | 3110-00-753-9028 | MS19059-53 | 96906 | SPRING HELICAL COMPRESSION:ACCESSORY DRIVE C SHIFTER SHAFT | EA 1 |
| 12 | 63 | PAHZZ | 3110-00-100-6155 | MS19059-51 | 96906 | BALL,BEARING:ACCESSORY DRIVE C SHIFTER SHAFT | EA 1 |
| 12 | 64 | PAHZZ | 2520-00-706-1279 | 7061279 | 19207 | BOOT,DUST AND MOISTURE:ACCESSORY DRIVE C SHIFTER SHAFT | EA 1 |
| 12 | 65 | PAHZZ | 5330-00-559-8733 | 7061271 | 19207 | SEAL,PLAIN ENCASED:DRIVE SHAFT, C ACCESSORY DRIVE | EA 1 |
| 12 | 66 | PAHZZ | 5365-00-706-1280 | 7061280 | 19207 | RING,RETAINING:ACCESSORY DRIVE C SHAFT SEAL AND BEARING | EA 2 |
| 12 | 67 | PAHZZ | 5340-00-706-1277 | 7061277 | 19207 | RING:BALL BEARING RETAINING,ACCESSORY DRIVE C | EA 1 |
| 12 | 68 | PAHZZ | 3110-00-144-8518 | 700078 | 00000 | BEARING,BALL,ANNULAR:ACCESSORY C DRIVE SHIFTER SHAFT | EA 1 |
| 12 | 69 | PAHZZ | 2520-00-706-1211 | 7061211 | 19207 | SHAFT,SHOULDERED:ACCESSORY DRIVE GEAR C | EA 1 |
| 12 | 49 | PAHZZ | 2520-00-706-1210 | 7061210 | 19207 | SLEEVE,SLIDING:CLUTCH C | EA 1 |
| 13 | 1 | PAFZZ | 5307-00-350-5532 | 8328010 | 19207 | STUD,PLAIN:ASSEMBLY MOUNTING | EA 2 |
| 13 | 2 | PAFZZ | 5310-00-685-3228 | MS35333-43 | 96906 | WASHER,LOCK ASSEMBLY MOUNTING | EA 2 |
| 13 | 3 | PAFZZ | 5310-00-926-5916 | MS51968-12 | 96906 | NUT,PLAIN HEXAGON:ASSEMBLY MOUNTING | EA 2 |
| 13 | 4 | PAHZZ | 5305-00-071-1788 | MS90728-87 | 96906 | SCREW,CAP,HEXAGON HEAD:ASSEMBLY MOUNTING | EA 4 |

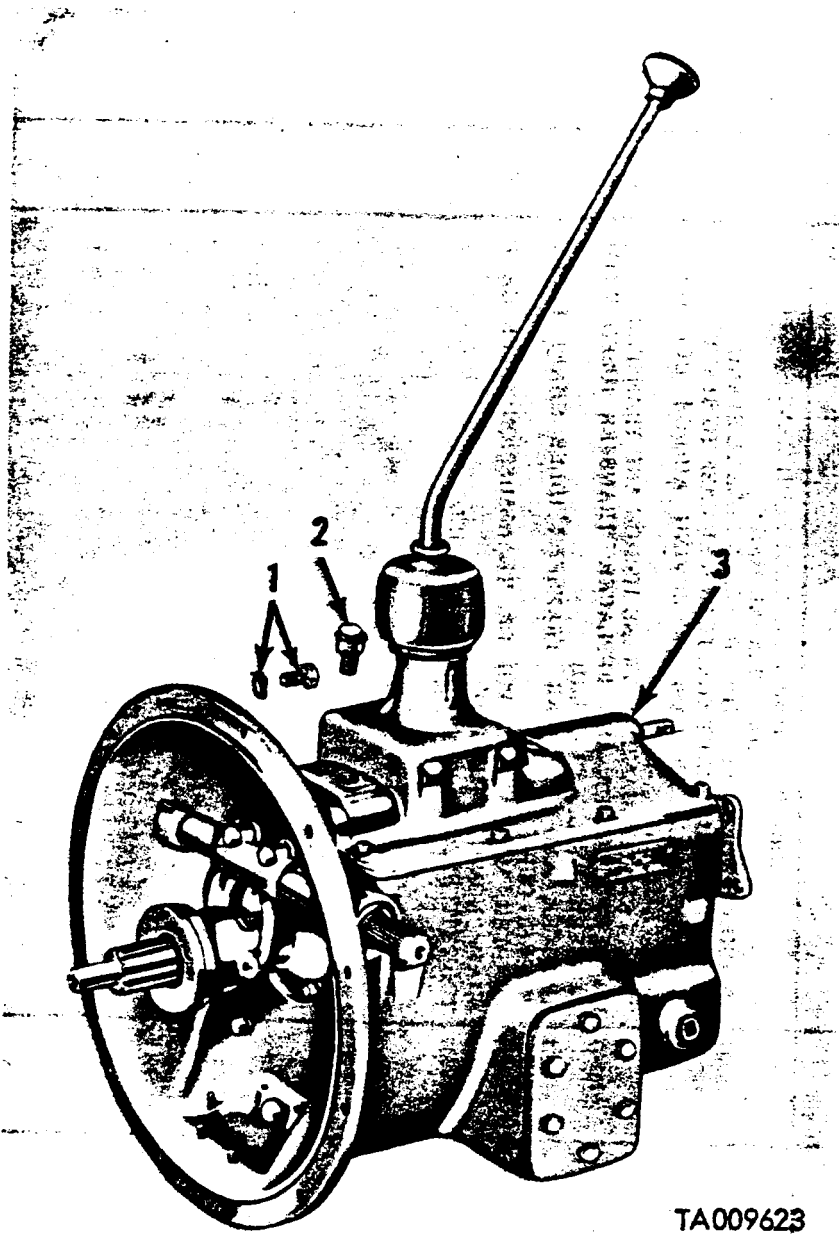
| (1) | (2) | (3) | (4) | (5) | (6) | (7) | (8) |
|--------------|------|-------|------------------|-------------|-------|--|------|
| ILLUSTRATION | | | | | | | |
| (a) | (b) | SMR | NATIONAL | PART | FSCM | DESCRIPTION | QTY. |
| FIG. | ITEM | CODE | STOCK | NUMBER | | | INC. |
| NO. | NO. | | NUMBER | | | USABLE ON CODE | IN |
| | | | | | | | UNIT |
| | | | | | | 2004-POWER TAKE-OFF ASSEMBLY-CONTINUED | |
| 13 | 5 | PAHZZ | 5310-00-209-0965 | MS35338-47 | 96906 | WASHER,LOCK:ASSEMBLY MOUNTING | EA 4 |
| 13 | 6 | PAFFF | 2520-00-229-5673 | 11609228 | 19207 | POWER TAKE-OFF,TRANSFER:ROCKWELL STANDARD MODEL P-136-C, WITH PUMP ASSEMBLY | EA 1 |
| 14 | 1 | PAFZZ | 4710-00-137-2019 | 11621138 | 19207 | LINE,OIL:TRANSFER CASE TO OIL PUMP | EA 1 |
| 14 | 2 | PAFZZ | 4730-00-278-4596 | 8328015 | 19207 | ADAPTER,STRAIGHT,PIPE-TO-TUBE:CONNECTOR OIL LINE TO PUMP | EA 1 |
| 14 | 4 | PAFZZ | 5330-00-522-8428 | 8344200-1 | 19207 | GASKET:CARRIER TO TRANSFER MOUNTING | EA 1 |
| 14 | 5 | PAOZZ | 4730-00-639-9921 | 444595 | 21450 | PLUG,PIPE:SLIDING CLUTCH FORK SETSCREW ACCESS | EA 1 |
| 14 | 6 | PAHZZ | 5306-00-262-9619 | 7412211 | 19207 | BOLT,MACHINE:SHIFTER SHAFT LOCK ACCESS | EA 1 |
| 14 | 7 | PAHZZ | 2520-00-492-4348 | 10896746 | 19207 | WASHER,SEAL:SHIFTER LOCK SPRING | EA 1 |
| 14 | 8 | PAHZZ | 5340-00-321-5710 | 6156769 | 19207 | SPRING,HELICAL COMPRESSION:SHIFTING LEVER LOCK | EA 1 |
| 14 | 9 | PAHZZ | 3110-00-100-6159 | MS19059-59 | 96906 | BALL,BEARING:SHIFTING LEVER LOCK | EA 1 |
| 14 | 10 | PAHZZ | 5330-00-741-3286 | 7413286 | 19207 | GASKET:GOVERNOR DRIVE HOLE | EA 1 |
| 14 | 11 | PAHZZ | 5365-00-741-3289 | 7413289 | 19207 | PLUG,MACHUNE THREAD:GOVERNOR DRIVE HOLE | EA 1 |
| 14 | 12 | XAFZZ | | 7413288 | 19207 | LEVER:SHIFTER SHAFT | EA 1 |
| 14 | 13 | PAFZZ | 5310-00-227-1921 | 8328008 | 19207 | WASHER,FLAT:SHIFTER SHAFT | EA 1 |
| 14 | 14 | PAFZZ | 5315-00-842-3044 | MS24665-283 | 96906 | PIN,COTTER:SHIFT LEVER | EA 2 |
| 14 | 15 | PAFZZ | 5310-00-165-8488 | 10896750 | 19207 | NUT,PLAIN,SLOTTED,HEXAGON:SHIFT LEVER | EA 1 |
| 14 | 16 | PAFZZ | 5310-00-809-5998 | MS27183-18 | 96906 | WASHER,FLAT:SHIFT LEVER | EA 1 |
| 14 | 17 | PAHZZ | 5330-00-808-7417 | 11621135 | 19207 | GASKET:OIL PUMP MOUNTING | EA 1 |
| 14 | 18 | PAFZZ | 5310-00-407-9566 | MS35338-45 | 96906 | WASHER,LOCK:OIL PUMP MOUNTING | EA 4 |
| 14 | 19 | PAFZZ | 5306-00-165-8251 | 11609558 | 19207 | SCREW,HEXAGON HEAD:OIL PUMP MOUNTING | EA 3 |
| 14 | 20 | PAFZZ | 5306-00-226-4826 | MS90728-33 | 96906 | SCREW,CAP,HEXAGON HEAD:OIL PUMP MOUNTING3 | EA 1 |
| 14 | 21 | PAFZZ | 2520-00-808-7379 | 11621137 | 19207 | PUMP ASSEMBLY, OIL:TRANSFER POWER TAKE-OFF | EA 1 |
| 14 | 22 | PAFZZ | 5310-00-809-4085 | MS27183-16 | 96906 | WASHER,FLAT:CLAMP,OIL LINE | EA 1 |
| 14 | 24 | PAFZZ | 4730-00-127-4461 | MS39202-6 | 96906 | ELBOW PIPE-TO-TUBE OIL LINE TRANSFER CASE TO PUMP | EA 1 |
| 14 | 25 | XAFZZ | | 7413265 | 19207 | CLAMP:LINE,OIL PUMP | EA 1 |
| 14 | 26 | PAFZZ | 5325-00-741-2204 | 7412204 | 19207 | GROMMET,RUBBER:OIL PUMP LINE | EA 1 |
| 15 | 1 | PAHZZ | 5310-00-426-0809 | 10896749 | 19207 | NUT,HEXAGON,SLOTTED:RETAINER OUTPUT SHAFT | EA 1 |
| 15 | 2 | PAHZZ | 5315-00-298-1481 | MS24665-357 | 96906 | PIN,COTTER:RETAINER NUT,OUTPUT SHAFT | EA 1 |
| 15 | 3 | PAHZZ | 5330-00-231-0285 | 8757686 | 19207 | RETAINER AND SEAL ASSEMBLY:SHAFT BEARING,OUTPUT | EA 1 |
| 15 | 3.1 | PAHZZ | 5310-00-919-8882 | 10938286 | 19207 | SEAL,OIL:POWER TAKE-OFF SHAFT | EA 1 |
| 15 | 3.2 | PAHZZ | | 7735601 | 19207 | RETAINER ASSEMBLY:BEARING | EA 1 |
| 15 | 4 | PAHZZ | 5306-00-225-8497 | MS90725-32 | 96906 | SCREW,CAP,HEXAGON HEAD:RETAINER,BEARING AND SEAL | EA 4 |
| 15 | 5 | PAHZZ | 5310-00-407-9566 | MS35338-45 | 19207 | WASHER,LOCK:RETAINER,BEARING AND SEAL | EA 4 |
| 15 | 6 | PAHZZ | 5330-00-615-6756 | 6156756 | 19207 | GASKET:BEARING CAP,OUTPUT SHAFT | EA 1 |
| 15 | 7 | PAHZZ | 3110-00-100-0799 | 137251 | 24617 | CUP,TAPERD ROLLER BEARING:DRIVE SHAFT | EA 2 |
| 15 | 8 | PAHZZ | 3110-00-142-4364 | 148346 | 24617 | CONE AND ROLLERS,TAPERED:DRIVE SHAFT | EA 2 |
| 15 | 9 | PAHZZ | 3020-00-741-3287 | 7413287 | 19207 | GEAR,WORM:DRIVE GOVERNOR | EA 1 |
| 15 | 10 | PAHZZ | 5315-00-032-1872 | 5168861 | 19207 | KEY,MACHINE:POWER TAKE-OFF SHAFT | EA 1 |
| 15 | 11 | PAHZZ | 5315-00-616-5514 | MS35756-6 | 96906 | KEY,WOODRUFF:POWER TAKE-OFF SHAFT | EA 1 |
| 15 | 12 | PAHZZ | 2520-00-355-7809 | 11621144 | 19207 | SHAFT,POWER TAKE-OFF:DRIVE | EA 1 |

| (1) | (2) | (3) | (4) | (5) | (6) | (7) | (8) |
|--------------|------|-------|------------------|------------|-------|---|------|
| ILLUSTRATION | | | | | | | QTY. |
| (a) | (b) | SMR | NATIONAL | PART | FSCM | DESCRIPTION | U/M |
| FIG. | ITEM | CODE | STOCK | NUMBER | | | INC. |
| NO. | NO. | | NUMBER | | | USABLE ON CODE | IN |
| | | | | | | | UNIT |
| | | | | | | 2004-POWER TAKE-OFF ASSEMBLY-CONTINUED | |
| 15 | 13 | PAFZZ | 9505-00-248-9850 | MS20995F47 | 96906 | LOCKWIRE:SETSCREW,SHIFTER FORK(1),SETSCREW SHIFTER FORK (1) | FT V |
| 15 | 14 | PAHZZ | 5305-00-270-7328 | 8328007 | 19207 | SETSCREW:LOCK,SHIFTER FORK | EA 1 |
| 15 | 15 | PAHZZ | 2520-00-734-9606 | 7349606 | 19207 | SHIFTER FORK:CLUTCH | EA 1 |
| 15 | 16 | PAHZZ | 5305-00-490-1850 | 10896745 | 19207 | SETSCREW:DRIVE CLUTCH | EA 1 |
| 15 | 17 | PAHZZ | 3040-00-077-1878 | 11621139 | 19207 | COUPLING,SHAFT,RIGID:TRANSFER POWER TAKE-OFF CLUTCH | EA 1 |
| 15 | 18 | PAHZZ | 2520-00-808-7385 | 11621140 | 19207 | CLUTCH,SLIDING SLEEVE:TRANSFER POWER TAKE-OFF | EA 1 |
| 15 | 19 | PAHZZ | 3120-00-516-7516 | 5284913 | 19207 | BEARING SLEEVE:GOVERNOR SHAFT | EA 1 |
| 15 | 20 | PAHZZ | 5330-00-585-1064 | MS29561-12 | 96906 | PACKING,PREFORMED: "O" RING,SHIFTER SHAFT | EA 1 |
| 12 | 21 | PAHZZ | 2520-00-030-7262 | 7349680 | 19207 | SHAFT,SHIFTER:SLIDING CLUTCH | EA 1 |
| 15 | 22 | PAHZZ | 5365-00-769-9003 | 7699003 | 19207 | SHIM SET:POWER TAKE-OFF END PLAY | EA 1 |
| | | | | 6143903 | 19207 | SHIM:0=.003 | EA 4 |
| | | | | 5186593 | 19207 | SHIM:.005 | EA 2 |
| | | | | 5186592 | 19207 | SHIM:.010 | EA 1 |
| 15 | 23 | XAHZZ | | 11621143 | 19207 | CARRIER ASSEMBLY | EA 1 |

SECTION III

SPECIAL TOOLS LIST

| (1) | (2) | (3) | (4) | (5) | (6) | (7) | (8) | |
|-----------------------------------|----------|-------|------------------|---------|-------|---|-----|--------------|
| ILLUSTRATION | | | | | | | | |
| (a) | (b) | SMR | NATIONAL | PART | FSCM | DESCRIPTION | U/M | QTY. |
| FIG. NO. | ITEM NO. | CODE | STOCK NUMBER | NUMBER | | USABLE ON CODE | | INC. IN UNIT |
| GROUP 26-TOOLS AND TEST EQUIPMENT | | | | | | | | |
| 2604-SPECIAL TOOLS | | | | | | | | |
| 16 | 1 | PEHHH | 5340-00-610-0919 | 7010362 | 19207 | BRACKET,ANGLE:LEFT SIDE TRANSFER CASE TO STAND | EA | 1 |
| 16 | 2 | PEHHH | 5340-00-610-0920 | 7010363 | 19207 | BRACKET,ANGLE:RIGHT SIDE TRANSFER CASE TO STAND | EA | 1 |
| 16 | 3 | PEHHH | 4910-00-694-4777 | 8708279 | 19207 | FIXTURE,TRANSFER CASE:REMOVING AND/OR REPLACING TRANSFER CASE | EA | 1 |
| 16 | 4 | PEHHH | 5120-00-338-6721 | 8708724 | 19207 | PULLER KIT,MECHANICAL:TRANSMISSION AND TRANSFER | EA | 1 |
| 16 | 5 | PEHHH | 5120-00-708-3241 | 7083241 | 19207 | HANDLE,REMOVER AND REPLACER:TRANSFER (USED WITH REMOVER-REPLACER 7083241) | EA | 1 |
| 16 | 6 | PEHHH | 5120-00-708-3247 | 7083247 | 19207 | REMOVER AND REPLACER:TRANSFER IDLER SHAFT FRONT BEARING CUP | EA | 1 |
| 16 | 7 | PEHHH | 5120-00-708-3254 | 7083254 | 19207 | ADAPTER,MECHANICAL PULLER:TRANSMISSION IDLER GEAR SHAFT "NON-ILLUSTRATED" | EA | 1 |
| | | PEFHH | 4910-00-795-0356 | 7950356 | 19207 | TOOL KIT:SPECIAL POWER TRAIN REBUILD | EA | 1 |



TA009623

Figure 1. Transmission assembly

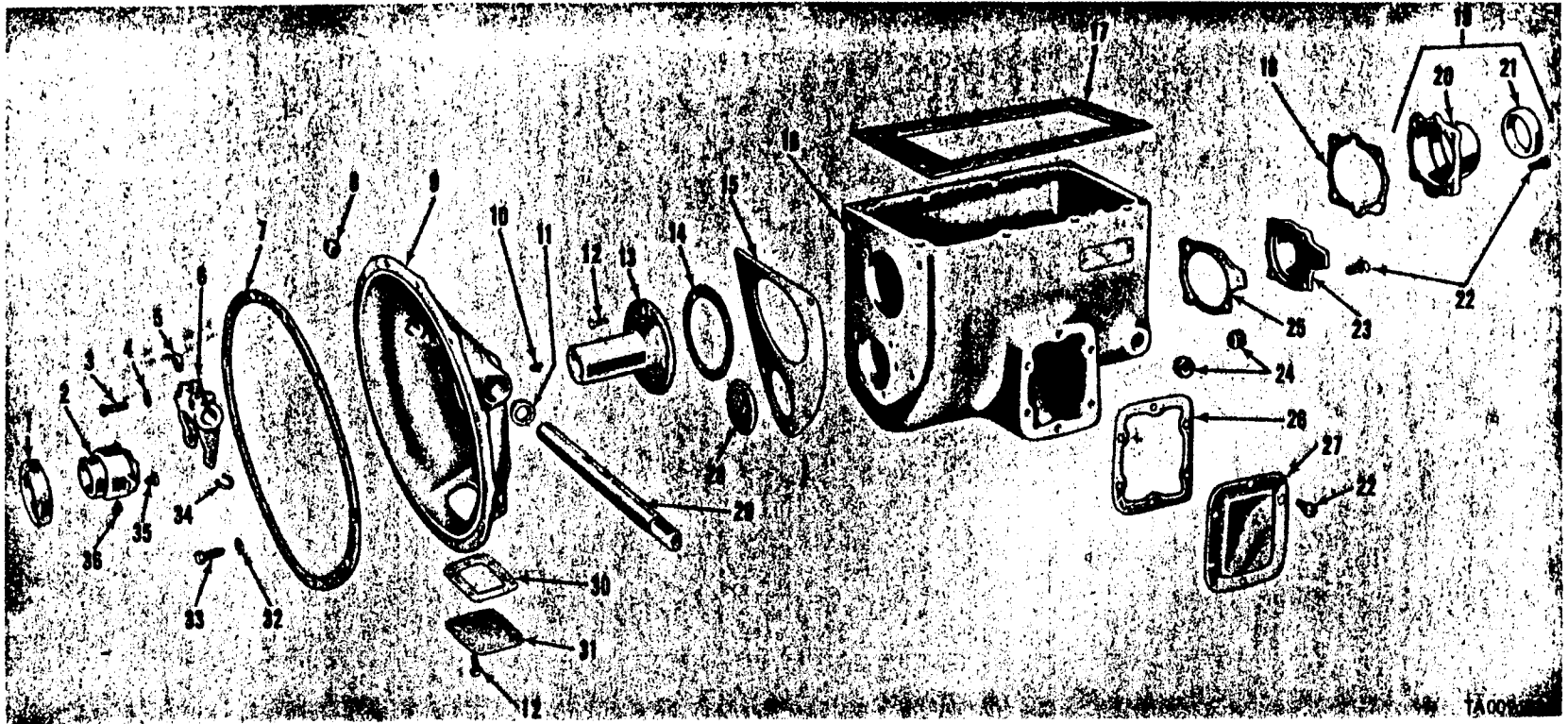
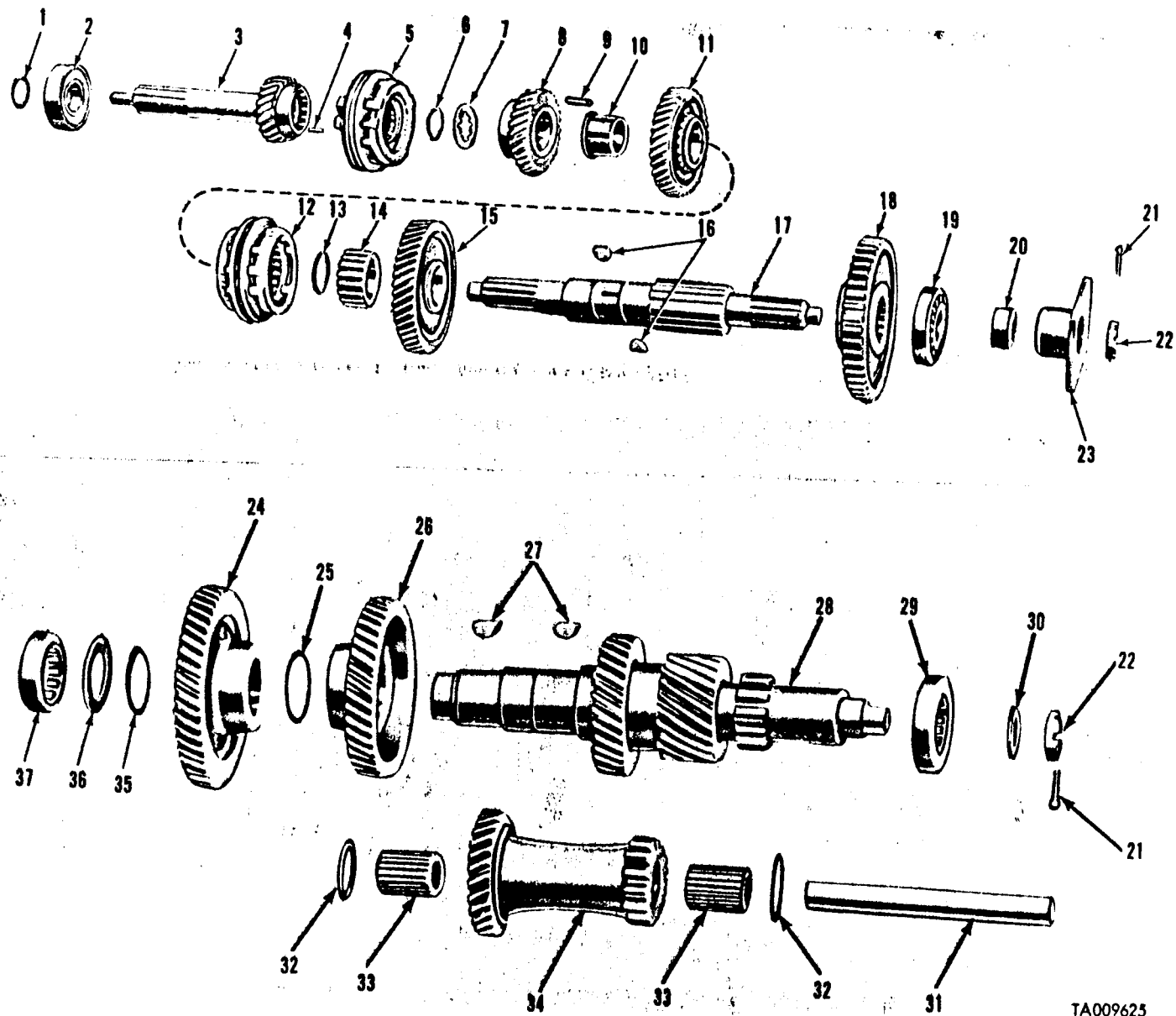


Figure 2. Transmission case, clutch housing and attaching parts.



TA009625

Figure 3. Transmission input and output shafts, countershafts and idler shafts with gears.

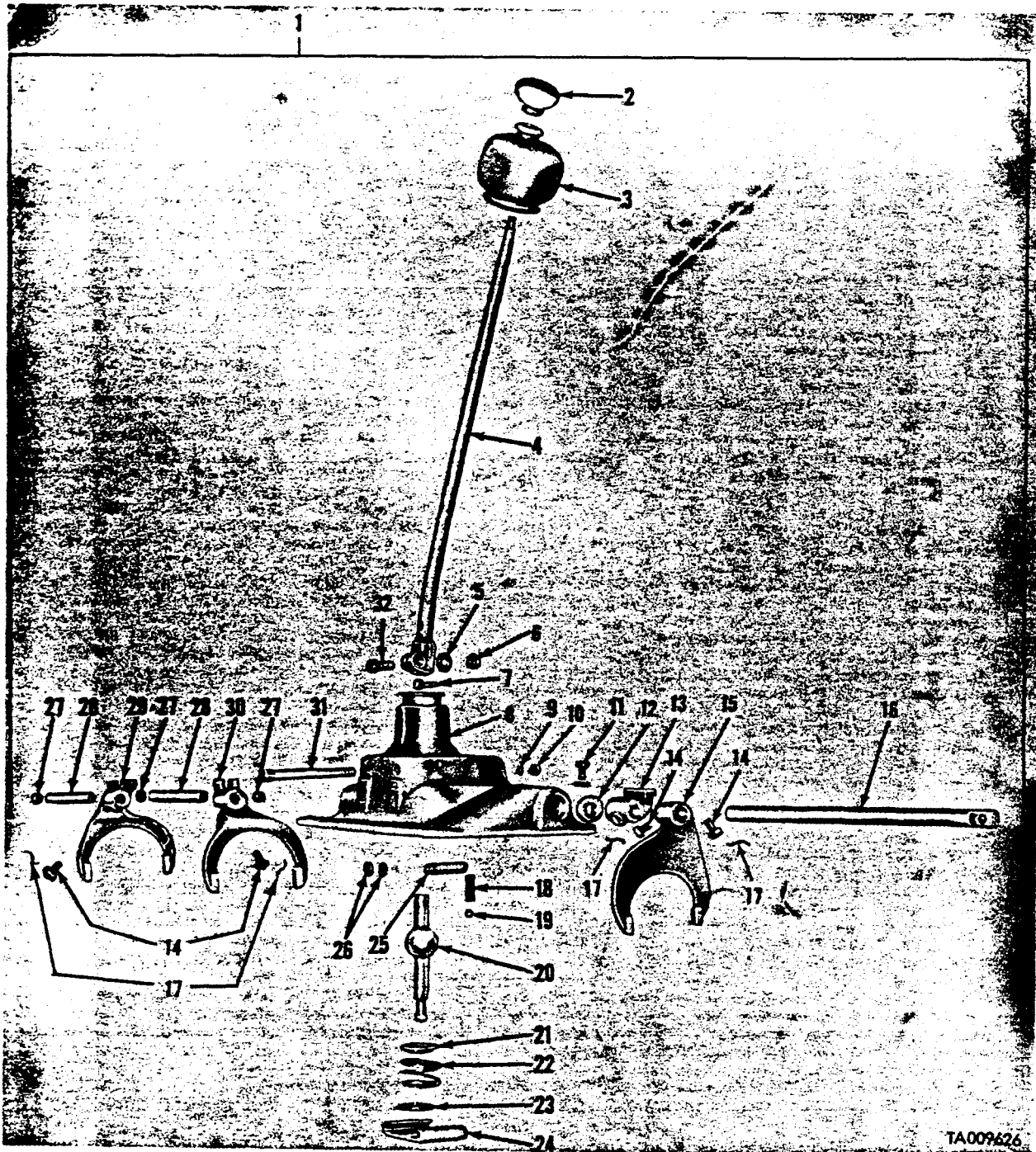


Figure 4. Transmission cover assembly.

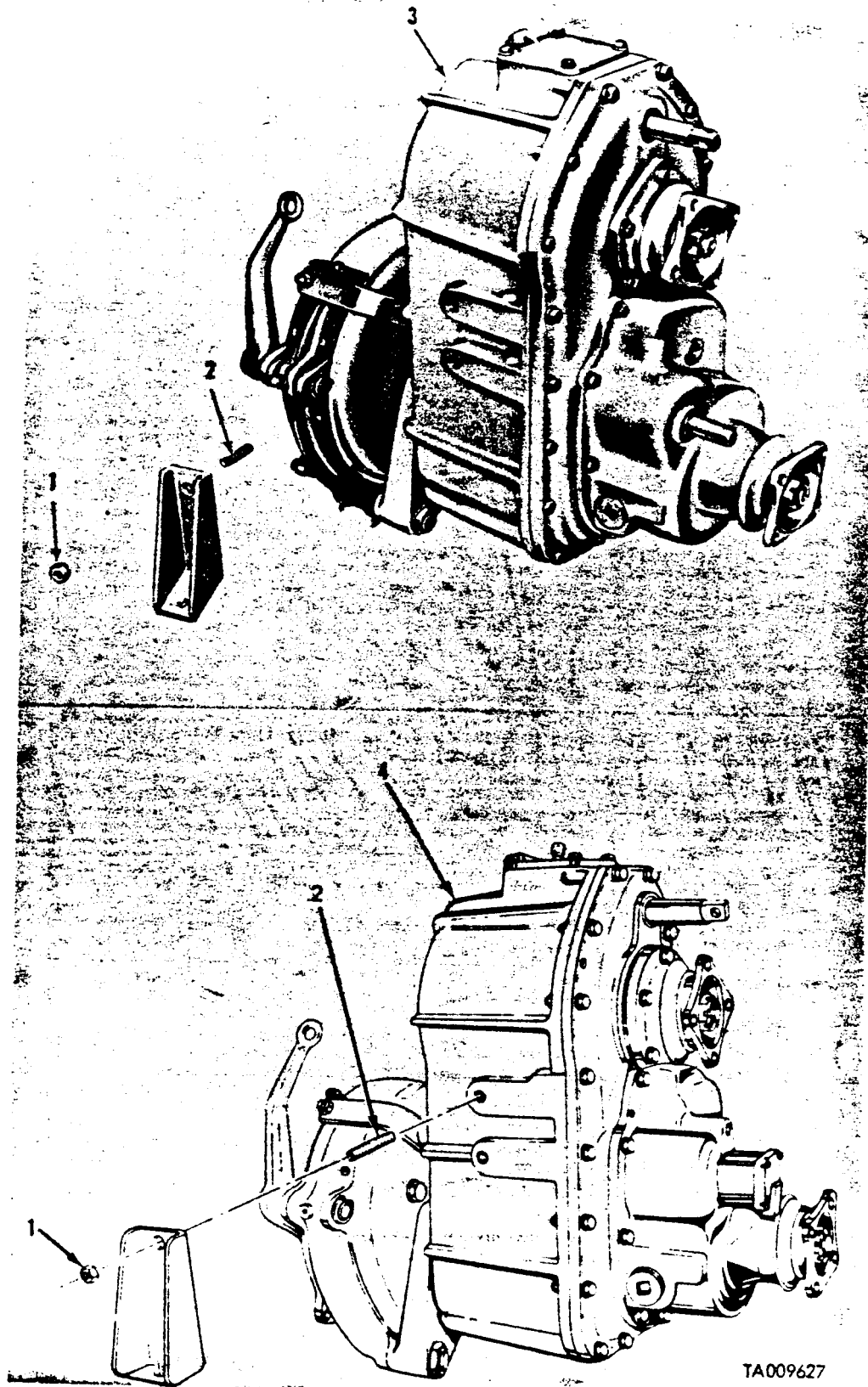


Figure 5. Power transfer assembly and attaching parts.

TA009627

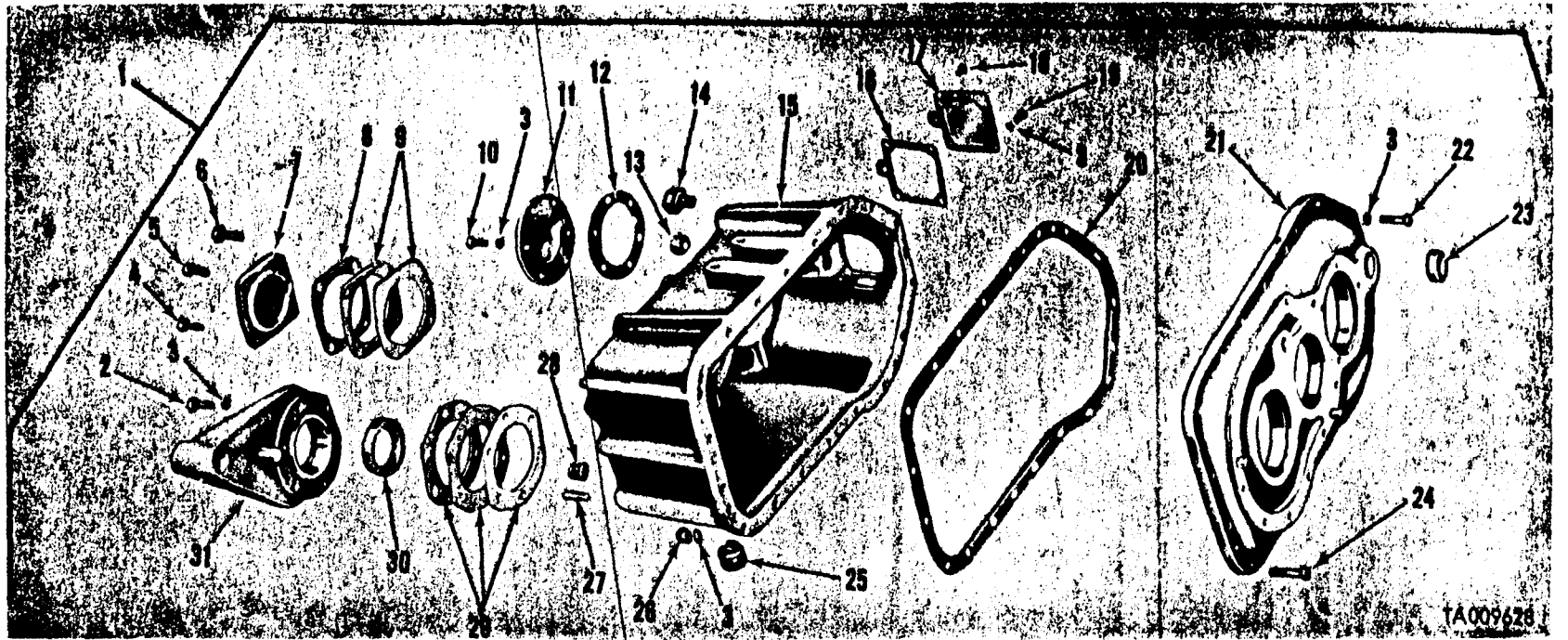
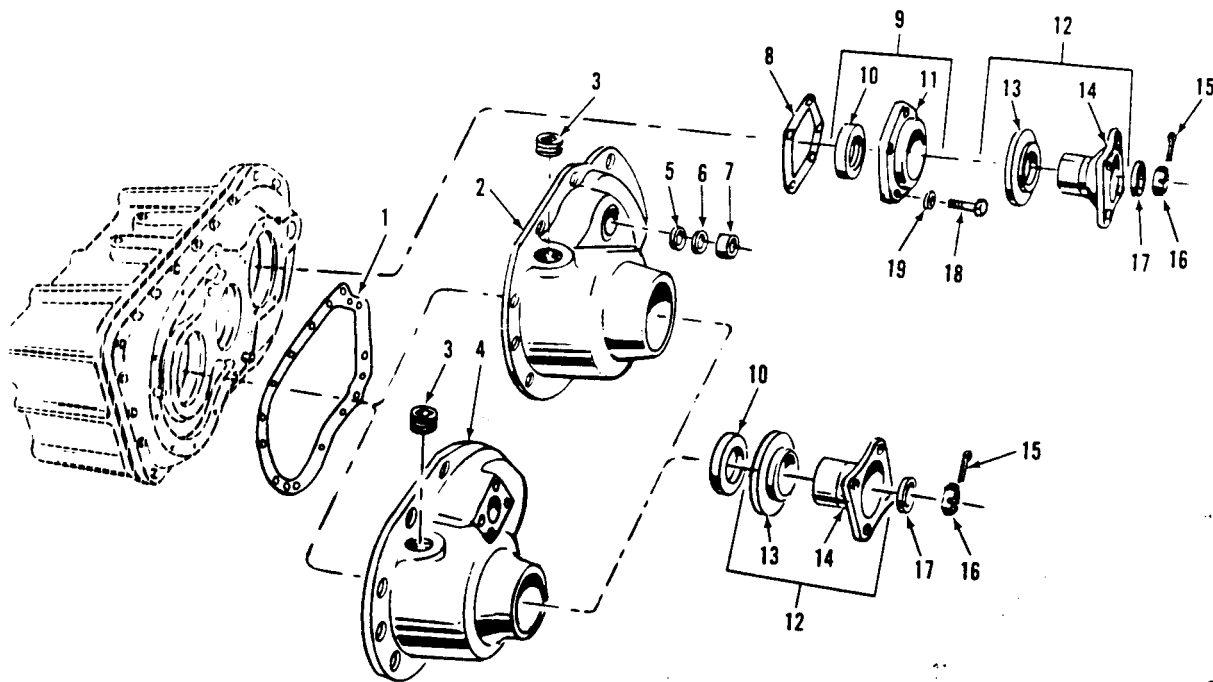
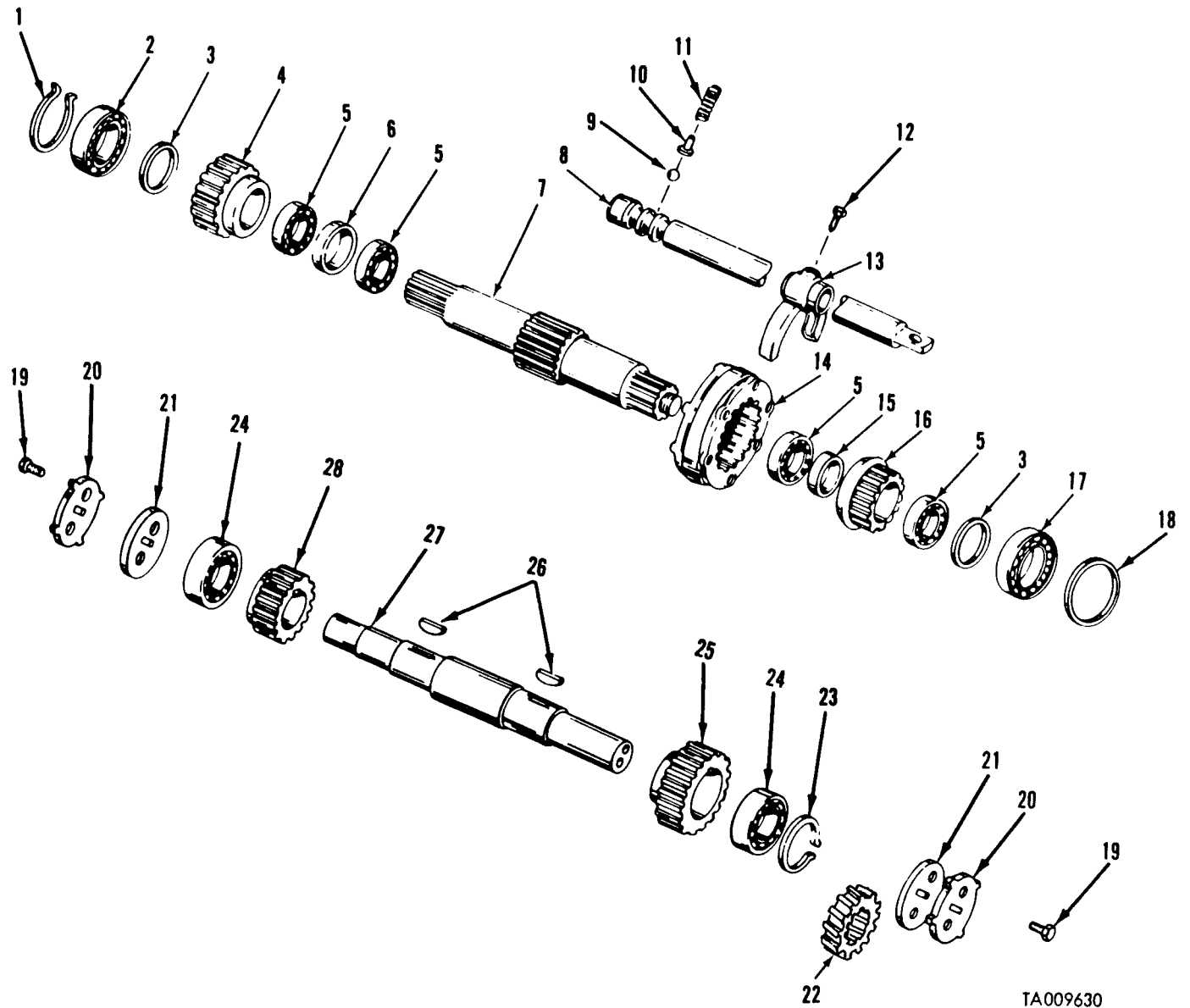


Figure 6. Housing, cover and related parts.



TA02i438

Figure 7. Transfer case and covers.



TA009630

Figure 8. Input shaft, countershafts and related parts.

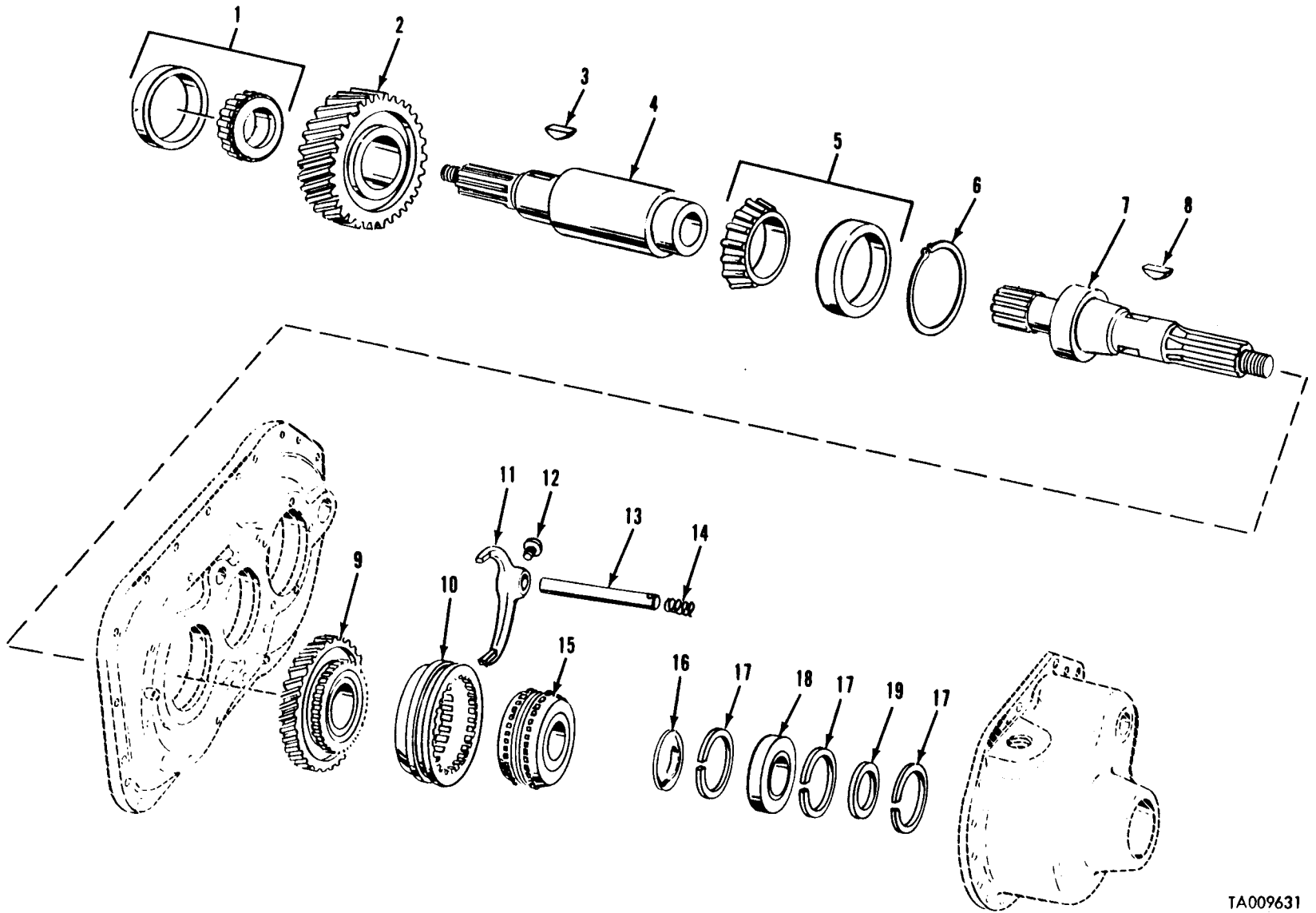


Figure 9. Transfer gears and related parts.

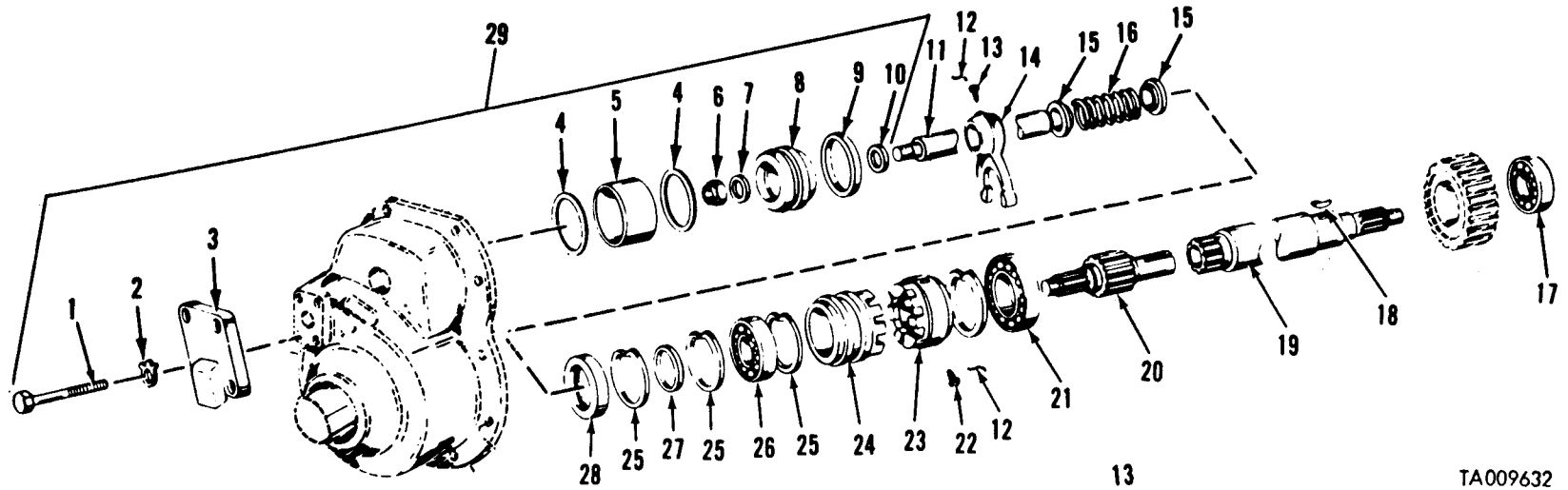


Figure 10. Transfer output shaft gears and air cylinders.

TA009632

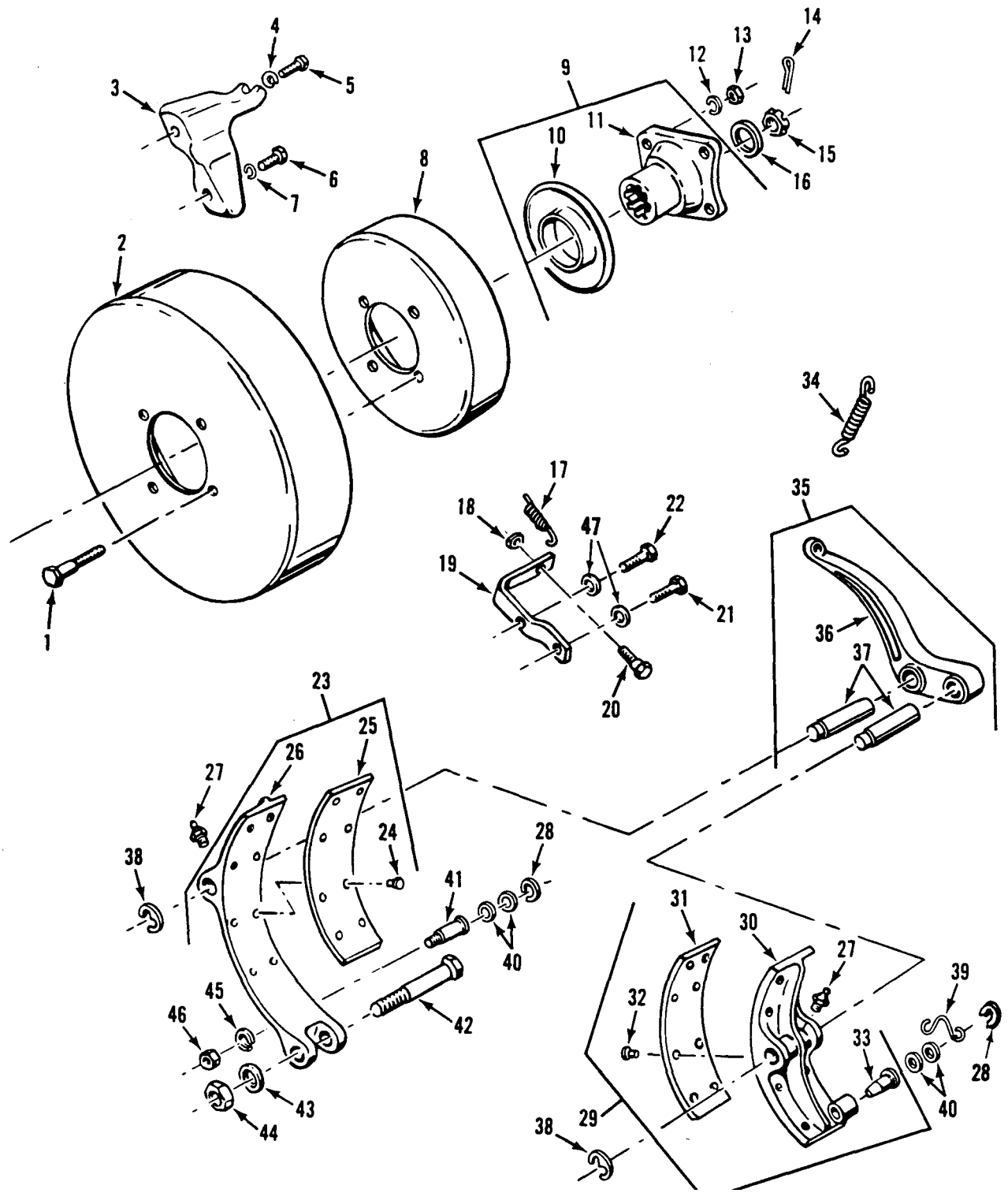


Figure 11. Parking brahe drum, shoes and related parts.

TA021439

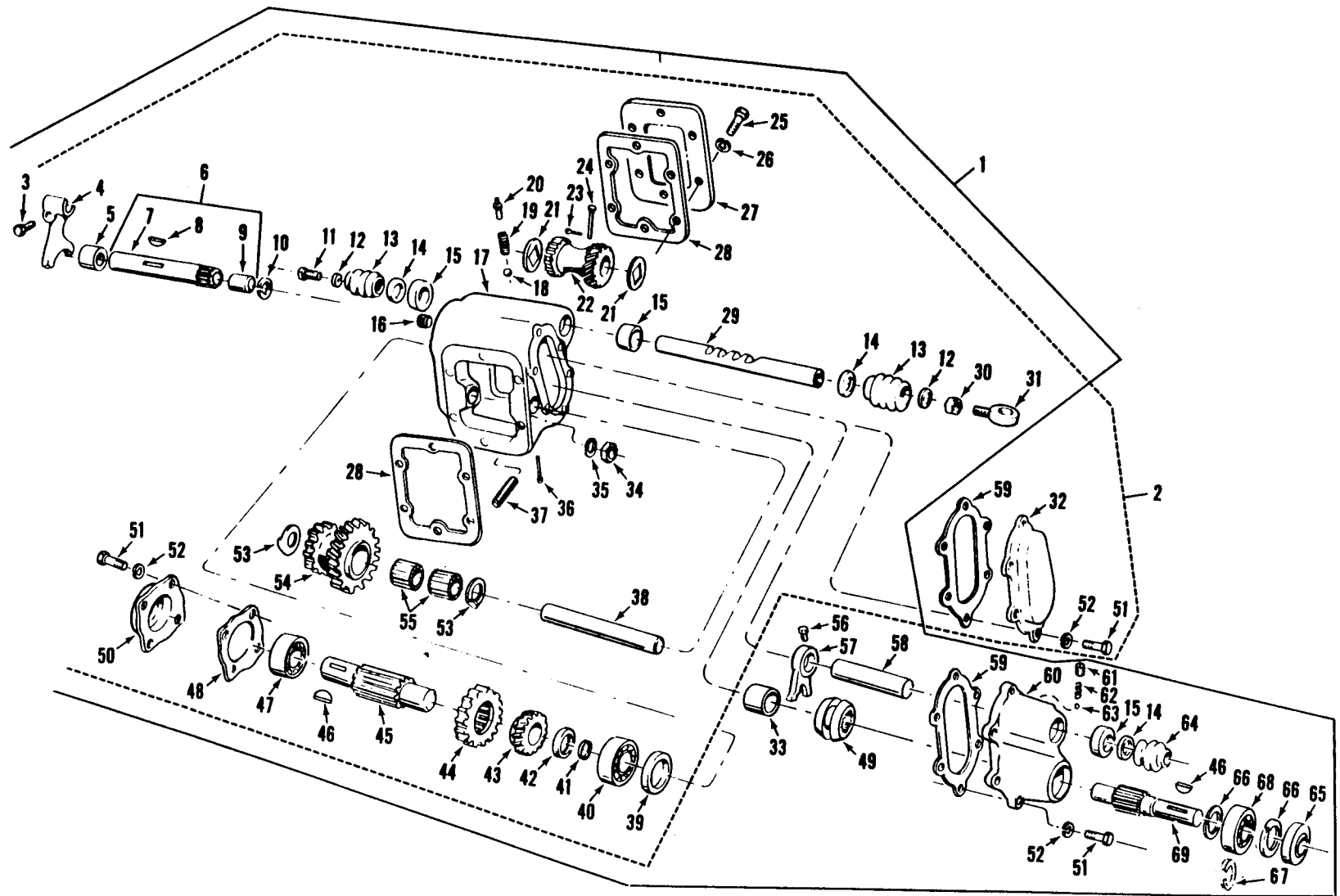


Figure 12. Transmission mounted power take-off assembly.

TA025462

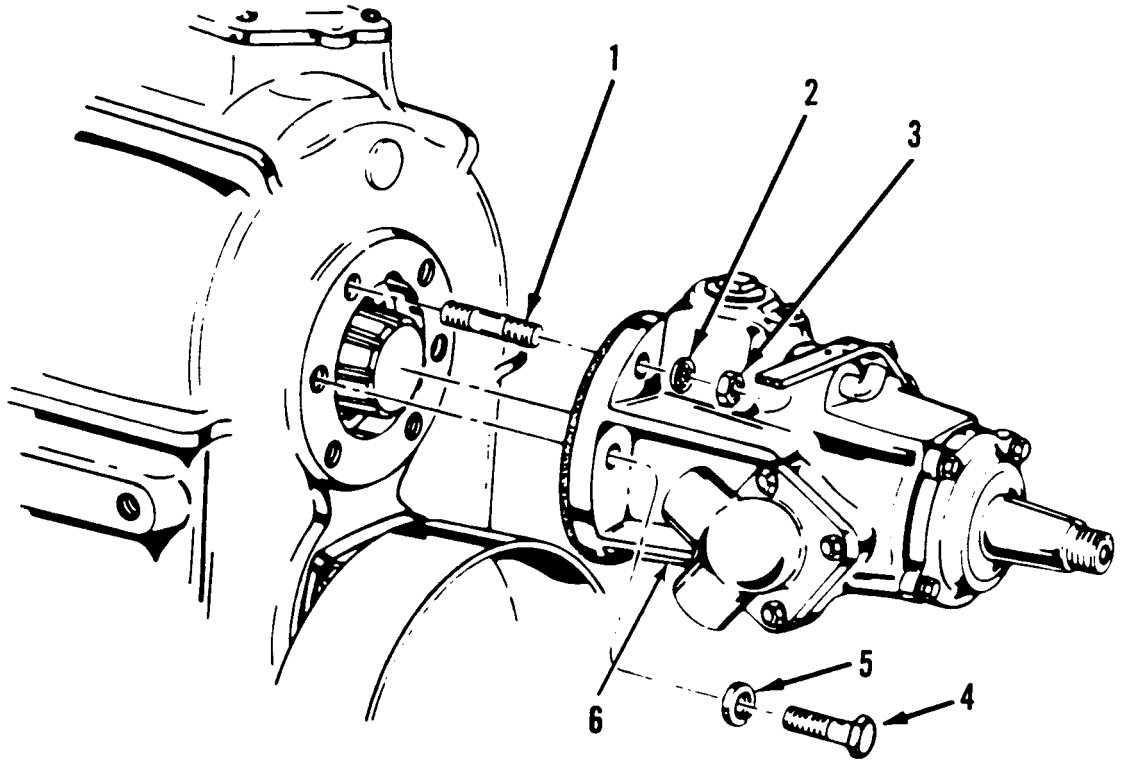
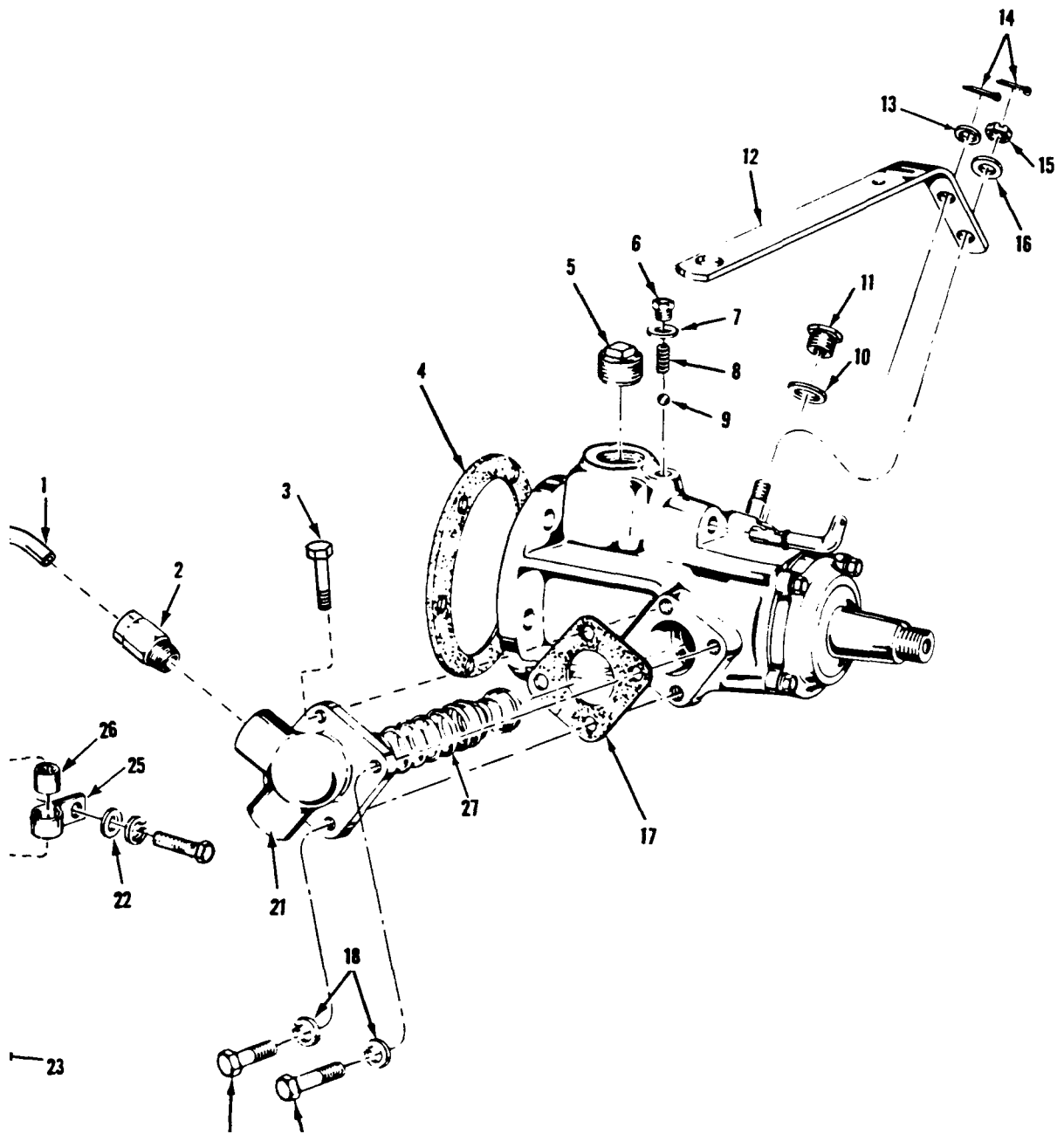


Figure 13. Transfer power take-off assembly.

TA009634



TA009635

Figure 14. Transfer power *take-off and related parts.*

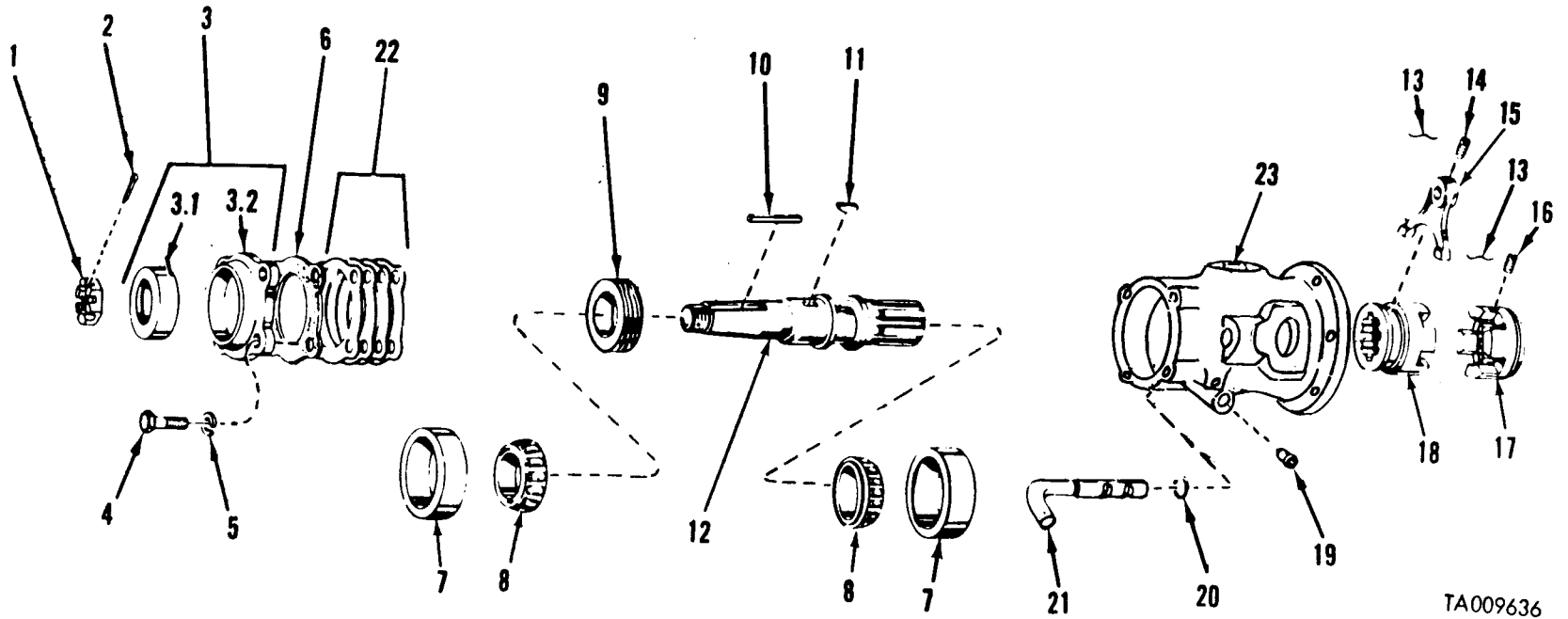


Figure 15. Transfer power take-off assembly and related parts.

TA009636

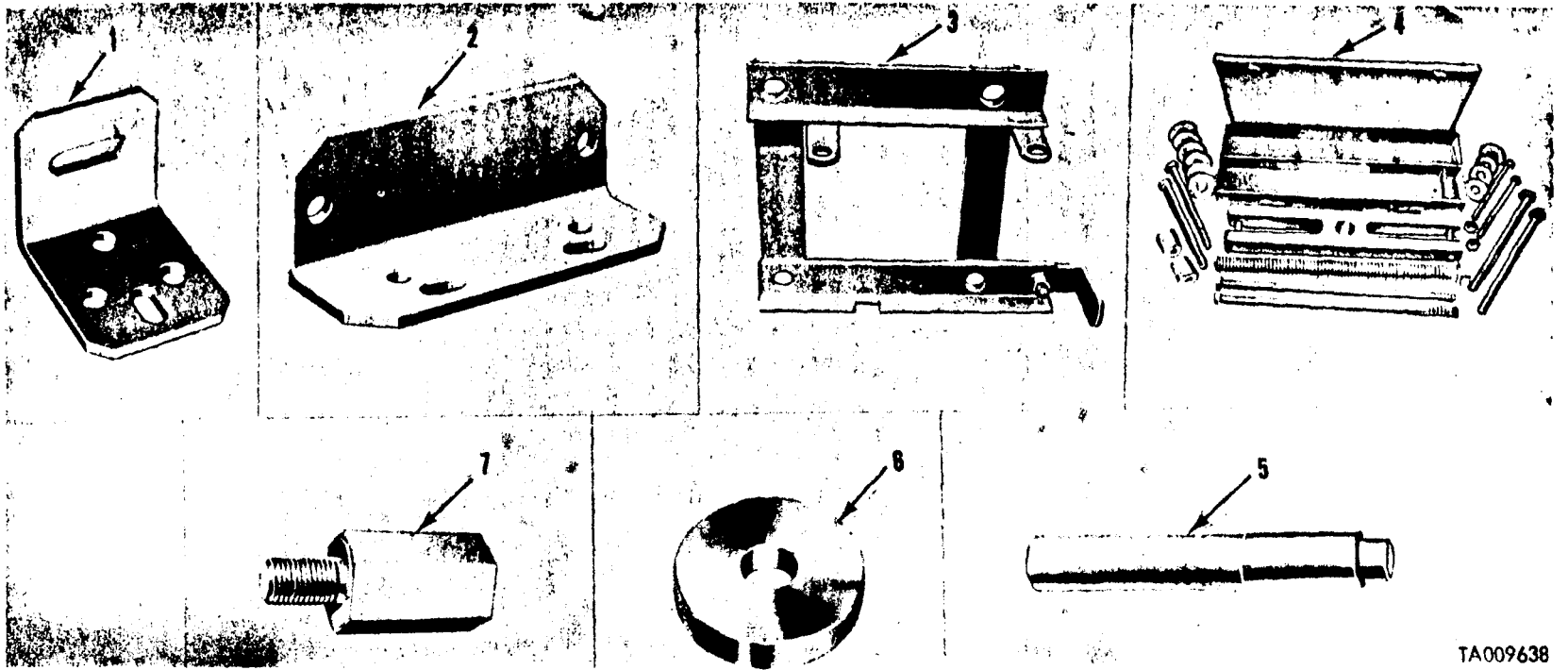


Figure 16. Special tools.

TA009638

SECTION IV

NATIONAL STOCK NUMBER AND PART NUMBER INDEX

National Stock Number Cross Referenced to Figure and Item Number

| National Stock Number | Figure No. | Item No. | National Stock Number | Figure No. | Item No. |
|--------------------------|---------------|-------------|--------------------------|---------------|-------------|
| 2520-00-001-7855 | 5 | 1 | 2520-00-752-0965 | 2 | 35 |
| 2520-00-024-6540 | 6 | 31 | 2520-00-752-0966 | 2 | 2 |
| 2520-00-030-7262 | | | 2520-00-752-0967 | 2 | 6 |
| 2520-00-089-8287 | 5 | 4 | 2550-00-752-0979 | 2 | 29 |
| 2520-00-090-5999 | 2 | 16 | 5330-00-752-0987 | 2 | NI |
| 2520-00-104-4603 | 12 | 20 | 2520-00-752-0994 | 3 | 3 |
| 2520-00-134-5124 | 7 | 14 | 2520-00-752-1003 | 3 | 23 |
| 2520-00-134-5124 | 11 | 11 | 2520-00-752-1019 | 3 | 17 |
| 2520-00-229-5673 | 13 | 6 | 2520-00-752-1022 | 3 | 5 |
| 2520-00-301-7734 | 9 | 5 | 2520-00-752-1023 | 3 | 12 |
| 2520-00-347-4520 | 1 | 3 | 2520-00-752-1032 | 2 | 28 |
| 2520-00-347-4571 | 12 | 54 | 2520-00-752-1037 | 3 | 28 |
| 2520-00-347-4591 | 4 | 1 | 2520-00-752-1039 | 2 | 25 |
| 2520-00-354-0771 | 2 | 27 | 2520-00-752-1047 | 3 | 31 |
| 2520-00-355-7809 | 15 | 12 | 2520-00-752-1057 | 4 | 29 |
| 2520-00-492-4348 | 14 | 7 | 2520-00-752-1059 | 4 | 30 |
| 2520-00-508-4664 | 2 | 13 | 2520-00-752-1060 | 4 | 15 |
| 2520-00-513-5811 | 9 | 17 | 2520-00-752-1093 | 4 | 20 |
| 2520-00-514-3782 | 8 | 10 | 2520-00-752-1094 | 4 | 13 |
| 2520-00-522-6128 | 12 | 19 | 2520-00-752-1096 | 4 | 21 |
| 2520-00-692-5753 | 6 | 17 | 2520-00-752-1097 | 4 | 16 |
| 2520-00-627-5978 | 4 | 8 | 2520-00-752-1099 | 4 | 28 |
| 2520-00-692-6065 | 2 | 19 | 2520-00-752-1276 | 7 | 12 |
| 2520-00-692-6070 | 2 | 23 | | 11 | 9 |
| 2520-00-692-6072 | 4 | 3 | 2520-00-752-1340 | 8 | 28 |
| 2520-00-692-6080 | 7 | 13 | 2520-00-752-1341 | 9 | 15 |
| 2520-00-692-6091 | 7 | 9 | 2520-00-752-1373 | 8 | 21 |
| 2520-00-706-1136 | 12 | 1 | 2520-00-752-1385 | 8 | 8 |
| 2520-00-706-1137 | 12 | 2 | 2520-00-752-1439 | 6 | 7 |
| 2520-00-706-1160 | 12 | 17 | 2520-00-752-1441 | 6 | 8 |
| 2520-00-706-1210 | 12 | 70 | 2520-00-752-1446 | 6 | 9 |
| 2520-00-706-1211 | 12 | 69 | 2520-00-752-1581 | 8 | 14 |
| 2520-00-706-1265 | 12 | 39 | 2520-00-752-1585 | 6 | 11 |
| 2520-00-706-1266 | 12 | 38 | 2520-00-753-8673 | 12 | 45 |
| 2520-00-706-1267 | 12 | 29 | 2520-00-781-6264 | 6 | 21 |
| 2520-00-706-1268 | 12 | 58 | 2520-00-781-6265 | 7 | 11 |
| 2520-00-706-1269 | 12 | 32 | 2520-00-786-0209 | 8 | 13 |
| 2520-00-706-1273 | 12 | 4 | 2520-00-808-7379 | 14 | 21 |
| 2520-00-706-1274 | 12 | 57 | 2520-00-808-7385 | 15 | 18 |
| 2520-00-706-1275 | 12 | 22 | 2520-00-808-7424 | 10 | 24 |
| 2520-00-706-1278 | 12 | 13 | 2520-00-808-7428 | 10 | 15 |
| 2520-00-706-1279 | 12 | 64 | 2520-00-808-7445 | 10 | 3 |
| 2520-00-706-1281 | 12 | 21 | 2520-00-832-7794 | 10 | 19 |
| 2520-00-734-9606 | 15 | 15 | 2520-00-832-8071 | 10 | 14 |
| 2520-00-737-1995 | 9 | 13 | 2520-00-832-8074 | 10 | 11 |
| 2520-00-737-2010 | 9 | 12 | 2520-00-832-8075 | 10 | 20 |
| 2520-00-737-2011 | 9 | 9 | 2520-00-832-8235 | 10 | 9 |
| 2520-00-737-2012 | 9 | 11 | 2520-00-832-8236 | 10 | 8 |
| 2520-00-752-0952 | 2 | 9 | 2520-00-832-8237 | 10 | 23 |
| 2520-00-752-0956 | 2 | 30 | 2520-00-884-4832 | 3 | 26 |
| 2520-00-752-0965 | 2 | 34 | 2520-00-884-4833 | 1 | 3 |
| 2520-00-752-0966 | 3 | 2 | 2520-00-884-4834 | 3 | 8 |
| 2520-00-737-2010 | 9 | 12 | 2520-00-884-4835 | 3 | 24 |
| 2520-00-737-2011 | 9 | 9 | 2520-00-885-3423 | 3 | 3 |
| 2520-00-737-2012 | 9 | 11 | 2520-00-930-3138 | 4 | 4 |
| 2520-00-737-2020 | 9 | 16 | 2520-00-933-3112 | 4 | 24 |
| 2520-00-752-0952 | 2 | 9 | 2530-00-289-7207 | 11 | 25 |
| 2520-00-752-0956 | 2 | 30 | 2530-00-622-3949 | 11 | 3 |
| 2520-00-752-0958 | 2 | 15 | 2530-00-693-0679 | 11 | 29 |
| 2520-00-752-0959 | 2 | 7 | 2530-00-693-0680 | 11 | 23 |

| National Stock Number Cross Referenced to Figure and Item Number-Continued | | | | | |
|--|------------|----------|-----------------------|-----------------|------------|
| National Stock Number | Figure No. | Item No. | National Stock Number | Figure No. | Item No. |
| 2530-00-736-8682 | 11 | 31 | 3120-00-753-8656 | 12 | 53 |
| 2530-00-736-8683 | 11 | 35 | 3120-00-753-8661 | 12 | 42 |
| 2530-00-752-1488 | 11 | 19 | 3120-00-753-9011 | 8 | 15 |
| 2530-00-752-1488 | 11 | 19 | 3120-00-832-7334 | 10 | 5 |
| 2530-00-752-1490 | 11 | 2 | 4710-00-137-2019 | 14 | 1 |
| 2530-00-752-9383 | 11 | 8 | 4730-00-012-5947 | 12 | 16 |
| 2540-00-626-2467 | 12 | 50 | 4730-00-044-4655 | 6 | 28 |
| 3020-00-303-5106 | 8 | 22 | 4730-00-050-4208 | 2 | 36 |
| 3020-00-312-8348 | 8 | 26 | | 11 | 27 |
| 3020-00-312-8350 | 9 | 3 | 4730-00-127-4461 | 14 | 24 |
| 3020-00-318-0908 | 12 | 44 | 4730-00-172-0034 | 2 | 10 |
| 3020-00-347-4549 | 12 | 43 | 4730-00-278-3380 | 2 | 24 |
| 3020-00-692-6084 | 8 | 29 | 4730-00-278-4596 | 14 | 2 |
| 3020-00-741-3287 | 15 | 9 | 4730-00-639-9921 | 14 | 5 |
| 3020-00-752-1005 | 3 | 14 | 4730-00-737-5248 | 7 | 3 |
| 3020-00-752-1006 | 3 | 18 | 4730-00-737-5249 | 6 | 25 |
| 3020-00-752-1015 | 3 | 8 | 4730-00-884-4838 | 3 | 8 |
| 3020-00-752-1016 | 3 | 11 | 4820-00-726-4719 | 1 | 2 |
| 3020-00-752-1017 | 3 | 15 | | 6 | 18 |
| 3020-00-752-1029 | 3 | 26 | 4820-00-808-7442 | 6 | 14 |
| 3020-00-752-1030 | 3 | 34 | 4910-00-694-4777 | 16 | 3 |
| 3020-00-752-1031 | 3 | 24 | 4910-00-795-0356 | NOT ILLUSTRATED | GROUP 2604 |
| 3020-00-786-0211 | 8 | 4 | 5120-00-338-6721 | 16 | 4 |
| 3020-00-786-0213 | 8 | 16 | 5120-00-708-3241 | 16 | 5 |
| 3040-00-077-1878 | 15 | 17 | 5120-00-708-3247 | 16 | 6 |
| 3040-00-706-1159 | 12 | 6 | 5120-00-708-3254 | 16 | 7 |
| 3040-00-808-7441 | 8 | 7 | | 4 | 11 |
| 3040-00-808-7445 | 8 | 28 | 5305-00-071-1786 | 8 | 19 |
| 3110-00-013-7743 | 8 | 25 | 5305-00-071-1785 | 6 | 10 |
| 3110-00-100-0799 | 15 | 7 | 5305-00-071-1788 | 6 | 2 |
| 3110-00-100-6155 | 2 | 63 | | 7 | 18 |
| 3110-00-100-6156 | 8 | 9 | | 11 | 6 |
| 3110-00-100-6159 | 14 | 9 | | 13 | 4 |
| 3110-00-101-6480 | 10 | 21 | 5305-00-071-1789 | 6 | 22 |
| 3110-00-117-0693 | 3 | 37 | | 11 | 22 |
| 3110-00-120-4276 | 3 | 33 | 5305-00-071-2055 | 6 | 6 |
| 3110-00-142-4364 | 15 | 8 | 5305-00-071-2235 | 10 | 1 |
| 3110-00-142-6040 | 4 | 9 | 5305-00-139-4620 | 6 | 24 |
| 3110-00-144-8518 | 12 | 68 | 5305-00-144-1495 | 12 | 25 |
| 3110-00-144-8668 | 10 | 26 | 5305-00-165-8248 | 10 | 22 |
| 3110-00-155-6686 | 3 | 29 | 5305-00-165-8250 | 6 | 5 |
| 3110-00-155-6706 | 3 | 19 | 5305-00-206-0932 | 11 | 41 |
| 3110-00-156-4704 | 12 | 47 | 5305-00-270-7328 | 15 | 14 |
| 3110-00-165-6329 | 10 | 17 | 5305-00-317-3102 | 1 | 1 |
| | 9 | 1 | 5305-00-490-1850 | 15 | 16 |
| 3110-00-183-6723 | 12 | 33 | 5305-00-543-4372 | 6 | 19 |
| 3110-00-198-1502 | 2 | 1 | 5305-00-695-7174 | 8 | 12 |
| 3110-00-227-3074 | 12 | 55 | | 11 | 20 |
| 3110-00-227-4123 | 3 | 4 | 5305-00-710-4195 | 4 | 32 |
| 3110-00-293-9305 | 8 | 17 | 5305-00-716-8184 | 2 | 33 |
| 3110-00-516-5490 | 12 | 40 | 5305-00-737-6534 | 12 | 14 |
| 3110-00-516-5491 | 9 | 20 | 5305-00-752-1058 | 4 | 14 |
| | 10 | 26 | 5305-00-752-1391 | 9 | 14 |
| 3110-00-554-3078 | 8 | 5 | 5306-00-021-4077 | 10 | 13 |
| 3110-00-753-9028 | 12 | 62 | | 4 | 11 |
| 3110-00-554-5960 | 3 | 2 | | 2 | 22 |
| 3110-00-887-5524 | 12 | 18 | 5306-00-044-5319 | 2 | 12 |
| 3110-00-902-1686 | 12 | 5 | 5306-00-009-3837 | 11 | 5 |
| 3120-00-516-7516 | 15 | 19 | 5306-00-165-8251 | 14 | 19 |
| 3120-00-737-3115 | 12 | 9 | 5306-00-174-4202 | 2 | 3 |
| 3120-00-752-1020 | 3 | 10 | 5306-00-225-8494 | 12 | 11 |
| 3120-00-752-1049 | 3 | 32 | 5306-00-225-8497 | 15 | 4 |
| 3120-00-752-1487 | 8 | 18 | 5306-00-225-8498 | 14 | 3 |
| | 9 | 21 | 5306-00-226-4826 | 14 | 20 |
| | 10 | 27 | 5306-00-238-5605 | 12 | 51 |
| 3120-00-752-1583 | 8 | 3 | 5306-00-262-9619 | 14 | 6 |

National Stock Number Cross Referenced to Figure and Item Number-Continued

| National Stock Number | Figure No. | Item No. | National Stock Number | Figure No. | Item No. |
|--------------------------|---------------|-------------|--------------------------|---------------|-------------|
| 5306-00-312-0845 | 11 | 42 | 5315-00-058-8581 | 12 | 8 |
| 5306-00-404-0075 | 12 | 3 | 5315-00-058-8583 | 3 | 27 |
| 5306-00-752-1014 | 11 | 1 | 5315-00-281-7839 | 9 | 10 |
| 5306-00-752-1055 | 4 | 31 | 5315-00-298-1481 | 3 | 21 |
| 5307-00-350-5532 | 13 | 1 | | 15 | 2 |
| 5307-00-753-8668 | 12 | 37 | 5315-00-312-0831 | 11 | 37 |
| 5307-00-695-7213 | 5 | 2 | 5315-00-316-0992 | 11 | 33 |
| 5310-00-080-6004 | 12 | 12 | 5315-00-616-5514 | 15 | 11 |
| 5310-00-145-2085 | 10 | 2 | 5315-00-616-5527 | 12 | 46 |
| 5310-00-165-8488 | 14 | 15 | 5315-00-692-6101 | 4 | 7 |
| 5310-00-167-0820 | 4 | 26 | 5315-00-699-8458 | 3 | 9 |
| 5310-00-177-0973 | 10 | 7 | 5315-00-699-8460 | 6 | 27 |
| 5310-00-209-0965 | 2 | 4 | 5315-00-735-1406 | 12 | 24 |
| | 4 | 5 | 5315-00-816-1794 | 12 | 23 |
| | 6 | 3 | 5315-00-842-3044 | 14 | 14 |
| | 7 | 19 | 5315-00-850-7038 | 8 | 24 |
| | 11 | 7 | | 9 | 4 |
| | 11 | 47 | | 10 | 18 |
| | 13 | 5 | 5320-00-443-5065 | 11 | 24 |
| 5310-00-227-1921 | 14 | 13 | | 11 | 32 |
| 5310-00-225-6993 | 10 | 6 | 5325-00-741-2204 | 14 | 26 |
| 5310-00-241-6664 | 5 | 1 | 5330-00-143-8666 | 6 | 30 |
| 5310-00-285-2169 | 3 | 7 | | 7 | 10 |
| 5310-00-279-3314 | 11 | 40 | | 10 | 28 |
| 5310-00-333-7519 | 11 | 28 | 5330-00-171-9052 | 12 | 49 |
| | 14 | 18 | 5330-00-231-0285 | 15 | 3 |
| | 15 | 5 | 5330-00-234-3317 | 2 | 25 |
| 5310-00-426-0809 | 15 | 1 | | 12 | 28 |
| 5310-00-514-6674 | 11 | 4 | 5330-00-285-5121 | 7 | 6 |
| | 12 | 52 | 5330-00-298-3947 | 12 | 15 |
| 5310-00-527-4222 | 10 | 10 | 5330-00-311-7774 | 6 | 16 |
| 5310-00-529-4103 | 3 | 22 | 5330-00-350-9958 | 2 | 21 |
| 5310-00-584-5272 | 2 | 32 | 5330-00-353-2465 | 7 | 7 |
| | 11 | 12 | 5330-00-454-0338 | 4 | 12 |
| 5310-00-616-7998 | 12 | 26 | 5330-00-522-8421 | 14 | 4 |
| | 12 | 35 | 5330-00-532-3606 | 12 | 48 |
| 5310-00-661-9568 | 2 | 5 | 5330-00-559-8733 | 12 | 65 |
| 5310-00-685-3228 | 13 | 2 | 5330-00-579-8156 | 7 | 5 |
| 5310-00-732-0558 | 11 | 46 | 5330-00-585-1064 | 15 | 20 |
| | 12 | 34 | | 14 | 4 |
| 5310-00-732-0560 | 11 | 13 | 5330-00-594-8953 | 2 | 14 |
| 5310-00-752-1036 | 3 | 30 | 5330-00-615-6756 | 15 | 6 |
| 5310-00-752-1048 | 3 | 36 | 5330-00-706-1270 | 12 | 59 |
| 5310-00-752-1234 | 7 | 16 | 5330-00-737-6534 | 12 | 14 |
| | 11 | 15 | 5330-00-741-3286 | 14 | 10 |
| 5310-00-752-1235 | 7 | 17 | 5330-00-752-0957 | 2 | 30 |
| | 11 | 16 | 5330-00-752-0958 | 2 | 15 |
| 5310-00-753-9169 | 11 | 44 | 5330-00-752-0959 | 2 | 7 |
| 5310-00-809-4085 | 14 | 22 | 5330-00-752-1061 | 2 | 17 |
| 5310-00-809-5998 | 14 | 16 | 5330-00-752-1437 | 7 | |
| 5310-00-832-7904 | 10 | 19 | 5330-00-752-7750 | 4 | 9 |
| | 8 | 20 | 5330-00-808-7417 | 14 | 17 |
| 5310-00-880-7745 | 6 | 26 | 5340-00-050-1593 | 4 | 27 |
| | 4 | 6 | 5340-00-321-6375 | 11 | 39 |
| | 11 | 18 | 5340-00-392-4017 | 2 | 34 |
| 5310-00-919-8882 | 15 | 3.1 | 5340-00-610-0919 | 16 | 1 |
| 5310-00-984-3807 | 4 | 10 | 5340-00-610-0920 | 16 | 2 |
| 5310-00-926-5916 | 13 | 3 | 5340-00-706-1277 | 12 | 67 |
| 5310-00-975-2075 | 11 | 17 | 5340-00-752-0976 | 2 | 8 |
| | 12 | 30 | 5340-00-752-1372 | 6 | 13 |
| 5310-00-982-6809 | 5 | 1 | 5340-00-753-8679 | 12 | 31 |
| 5315-00-012-4553 | 3 | 16 | 5355-00-962-3018 | 4 | 2 |
| 5315-00-013-7214 | 7 | 15 | 5360-00-342-7071 | 11 | 34 |
| | 11 | 14 | 5360-00-347-4563 | 4 | 18 |
| 5315-00-013-7258 | 12 | 36 | 5360-00-692-6074 | 4 | 25 |
| 5315-00-032-1872 | 15 | 10 | 5360-00-692-6075 | 4 | 22 |

National Stock Number Cross Referenced to Figure and Item Number-Contin

| National Stock Number | Figure No. | Item No. | National Stock Number | Figure No. | Item No. |
|--------------------------|---------------|-------------|--------------------------|---------------|-------------|
| 5360-00-692-6089 | 8 | 11 | 5365-00-752-1021 | 3 | 20 |
| 5360-00-693-0615 | 11 | 17 | 5365-00-752-1045 | 3 | 35 |
| 5360-00-737-2020 | 9 | 16 | 5365-00-752-1046 | 3 | 25 |
| 5360-00-832-8072 | 10 | 16 | 5365-00-752-1277 | 6 | 29 |
| 5365-00-508-4675 | 3 | 1 | 5365-00-752-1374 | 8 | 23 |
| 5365-00-508-4691 | 12 | 41 | 5365-00-752-1575 | 8 | 6 |
| 5365-00-696-0267 | 9 | 19 | 5365-00-752-1584 | 8 | 1 |
| 5365-00-664-2779 | 10 | 25 | 5365-00-769-6481 | 12 | 61 |
| | 11 | 38 | 5365-00-769-9003 | 15 | 22 |
| 5365-00-699-8456 | 3 | 6 | 5365-00-832-7774 | 10 | 4 |
| 5365-00-699-8457 | 3 | 13 | 5365-00-808-7423 | GROUP 0801 | |
| 5365-00-699-8459 | 4 | 23 | 9505-00-248-9850 | 4 | 17 |
| 5365-00-706-1276 | 12 | 10 | | 10 | 12 |
| 5365-00-706-1280 | 12 | 66 | | 15 | 13 |
| 5365-00-741-3289 | 14 | 11 | | | |

Part Number Cross Referenced to Figure and Item Number-Continued

| Part Number | FSCM | Fig. No. | Item No. | Part Number | FSCM | Fig. No. | Item No. |
|--------------|-------|----------|----------|-------------|-------|----------|----------|
| MS15003-1 | 96906 | 11 | 27 | MS90725-33 | 96906 | 14 | 3 |
| | | 2 | 36 | MS90726-90 | 96906 | 4 | 32 |
| MS15003-7 | 96906 | 2 | 10 | MS90726-112 | 96906 | 2 | 33 |
| MS16633-1098 | 96906 | 11 | 38 | MS90728-33 | 96906 | 14 | 20 |
| MS17131-35 | 96906 | 12 | 33 | MS90728-58 | 96906 | 6 | 19 |
| MS19059-51 | 96906 | 12 | 63 | MS90728-84 | 96906 | 6 | 10 |
| MS19059-53 | 96906 | 12 | 62 | MS90728-85 | 96906 | 8 | 19 |
| MS19059-55 | 96906 | 8 | 9 | MS90728-87 | 96906 | 6 | 2 |
| MS19059-59 | 96906 | 14 | 9 | | | 11 | 6 |
| MS19061-11 | 96906 | 4 | 19 | | | 11 | 22 |
| MS19061-15 | 96906 | 12 | 18 | | | 13 | 4 |
| MS20995-F47 | 96906 | 4 | 17 | | | 7 | 18 |
| | | 10 | 12 | MS90728-88 | 96906 | 6 | 22 |
| | | 15 | 13 | MS90728-89 | 96906 | 6 | 6 |
| MS24665-283 | 96906 | 14 | 14 | | | 7 | 18 |
| MS24665-285 | 96906 | 12 | 23 | ST202 | 31007 | 9 | 20 |
| MS24665-357 | 96906 | 3 | 21 | | | 10 | 26 |
| | | 15 | 2 | 1KS5021 | 44731 | 10 | 21 |
| MS24665-359 | 96906 | 7 | 15 | 10872096 | 19207 | 1 | 3 |
| | | 11 | 14 | 10896745 | 19207 | 15 | 16 |
| MS24665-497 | 96906 | 12 | 36 | 10896746 | 19207 | 14 | 7 |
| MS27183-14 | 96906 | 12 | 12 | 10896748 | 19207 | 11 | 24 |
| MS27183-16 | 96906 | 14 | 22 | 10896748 | 19207 | 11 | 32 |
| MS27183-18 | 96906 | 14 | 16 | 10896749 | 19207 | 15 | 1 |
| MS28775-212 | 96906 | 7 | 5 | 10896750 | 19207 | 14 | 5 |
| MS29561-12 | 96906 | 15 | 20 | 10910354 | 19207 | 12 | 25 |
| MS35333-43 | 96906 | 13 | 2 | 10913209 | 19207 | 10 | 4 |
| MS35335-31 | 96906 | 12 | 26 | 10924755 | 19207 | 8 | NI |
| MS35335-34 | 96906 | 11 | 4 | 10937790 | 19207 | 4 | 4 |
| MS35335-20 | 96906 | 12 | 52 | 10937974 | 19207 | 4 | 24 |
| | 96906 | 11 | 10 | 10938286 | 19207 | 15 | 3.1 |
| MS35338-47 | 96906 | 2 | 4 | 10914635 | 19207 | 3 | 3 |
| | | 4 | 5 | 10914636 | 19207 | 3 | 24 |
| | | 6 | 3 | 10914637 | 19207 | 3 | 8 |
| | | 7 | 19 | 10914638 | 19207 | 3 | 26 |
| | 96906 | 11 | 7 | 10937391 | 19207 | 10 | 22 |
| | | 11 | 47 | 10937638 | 19207 | 10 | 19 |
| | | 13 | 5 | 10938287 | 19207 | 6 | 23 |
| MS35338-48 | 96906 | 2 | 32 | 10945186 | 19207 | 10 | 16 |
| MS35648-5 | 96906 | 4 | 27 | 10948042 | 19207 | 10 | 3 |
| MS35691-21 | 96906 | 12 | 20 | 10948043 | 19207 | 10 | 8 |
| MS35756-6 | 96906 | 15 | 11 | 10948080 | 19207 | 10 | 17 |
| MS35756-17 | 96906 | 3 | 16 | 10948080 | 19207 | 10 | 17 |
| MS35756-18 | 96906 | 12 | 46 | | | 9 | 1 |
| MS35756-105 | 96906 | 8 | 27 | 10948082 | 19207 | 8 | 25 |
| | | 9 | 4 | 10948099 | 19207 | 10 | 11 |
| | | 10 | 18 | 10948100 | 19207 | 10 | 14 |
| MS35756-109 | 96906 | 12 | 8 | 10948101 | 19207 | 10 | 20 |
| MS35756-110 | 96906 | 3 | 27 | 10948103 | 19207 | 8 | 24 |
| MS35769-4 | 96906 | 4 | 9 | | | 8 | NI |
| MS39202-6 | 96906 | 14 | 24 | 10948105 | 19207 | 10 | 24 |
| MS49005-10 | 96906 | 2 | 24 | 10948106 | 19207 | 10 | 23 |
| MS51915-21-1 | 96906 | 4 | 12 | 10948108 | 19207 | 10 | 15 |
| MS51922-13 | 96906 | 4 | 10 | 10948109 | 19207 | 7 | 2 |
| MS51943-44 | 96906 | 5 | 1 | 11609221 | 19207 | 10 | 7 |
| MS51967-8 | 96906 | 11 | 46 | 11609224 | 19207 | 5 | 4 |
| MS51968-8 | 96906 | 12 | 34 | 11609226 | 19207 | 5 | 3 |
| MS51968-11 | 96906 | 4 | 6 | 11609228 | 19207 | 13 | 6 |
| | 96906 | 11 | 18 | 11609328-1 | 19207 | 6 | 5 |
| MS51968-12 | 96906 | 13 | 3 | | | 11 | 21 |
| | | 11 | 18 | 11609328-2 | 19207 | 6 | 24 |
| MS51968-14 | 96906 | 11 | 13 | | | 11 | 20 |
| MS90725-16 | 96906 | 10 | 1 | 11609558 | 19207 | 14 | 19 |
| MS90725-31 | 96906 | 12 | 11 | 11621135 | 19207 | 14 | 17 |
| MS90725-32 | 96906 | 15 | 4 | 11621137 | 19207 | 14 | 21 |

Part Number Cross Referenced to Figure and Item Number-Continued

| Part Number | FSCM | Fig. No. | Item No. | Part Number | FSCM | Fig. No. | Item No. |
|-------------|-------|----------|----------|-------------|-------|----------|----------|
| 11621138 | 19207 | 14 | 1 | 7061268 | 19207 | 12 | 58 |
| 11621139 | 19207 | 15 | 17 | 7061269 | 19207 | 12 | 32 |
| 11621140 | 19207 | 15 | 18 | 7061270 | 19207 | 12 | 59 |
| 11621143 | 19207 | 15 | 23 | 7061271 | 19207 | 12 | 65 |
| 11621144 | 19207 | 15 | 12 | 7061272 | 19207 | 12 | 15 |
| 11621145 | 19207 | 8 | 7 | 7061273 | 19207 | 12 | 4 |
| 11621147 | 19207 | 6 | 15 | 7061274 | 19207 | 12 | 57 |
| 11621191 | 19207 | 8 | 28 | 7061275 | 19207 | 12 | 22 |
| 11621193 | 19207 | 6 | 14 | 7061276 | 19207 | 12 | 10 |
| 125947 | 21450 | 12 | 16 | 7061278 | 19207 | 12 | 13 |
| 137251 | 19207 | 15 | 7 | 7061280 | 19207 | 12 | 66 |
| 148346 | 24617 | 18 | 8 | 7061281 | 19207 | 12 | 21 |
| 2135-1 | 08162 | 2 | 1 | 7064466 | 19207 | 11 | 39 |
| 444595 | 21450 | 14 | 5 | 7064467 | 19207 | 11 | 40 |
| 444655 | 19207 | 6 | 28 | 7064468 | 19207 | 11 | 28 |
| 48488 | 62983 | 4 | 26 | 7064469 | 19207 | 11 | 41 |
| 500037 | 21450 | 12 | 49 | 7064470 | 19207 | 11 | 33 |
| 5168861 | 19207 | 15 | 10 | 7083241 | 19207 | 16 | 5 |
| 5143782 | 19207 | 8 | 10 | 7083247 | 19207 | 16 | 6 |
| 5164525 | 19207 | 7 | 6 | 7083254 | 19207 | 16 | 7 |
| 5196397 | 19207 | 1 | 2 | 713925 | 21450 | 8 | 2 |
| | | 6 | 18 | 7349606 | 19207 | 15 | 15 |
| 5186592 | 19207 | | | 7349680 | 19207 | 15 | 21 |
| 5186593 | 19207 | | | 7351406 | 19207 | 12 | 24 |
| 5214784 | 19207 | 12 | 62 | 7363016 | 19207 | 8 | 16 |
| 5214807 | 19207 | 2 | 3 | 7363017 | 19207 | 8 | 4 |
| 521606 | 12204 | 3 | 33 | 7368681 | 19207 | 11 | 25 |
| 5226033 | 19207 | 2 | 5 | 7368682 | 19207 | 11 | 31 |
| 5226140 | 19207 | 12 | 20 | 7368683 | 19207 | 11 | 35 |
| 5384913 | 19207 | 15 | 19 | 7371995 | 19207 | 9 | 13 |
| 5294103 | 19207 | 3 | 22 | 7372010 | 19207 | 9 | 12 |
| 5323606 | 19207 | 12 | 48 | 7372011 | 19207 | 9 | 9 |
| 5323473 | 19207 | 12 | 27 | 7372012 | 19207 | 9 | 11 |
| 5226128 | 19207 | 12 | 19 | 7372020 | 19207 | 9 | 16 |
| 583509 | 21450 | 2 | 21 | 7373115 | 19207 | 12 | 9 |
| 6143903 | 19207 | | | 7373243 | 19207 | 11 | 34 |
| 594119 | 21450 | 1 | 1 | 7375249 | 19207 | 6 | 25 |
| 6156769 | 19207 | 14 | 8 | 7376534 | 19207 | 12 | 14 |
| 6156756 | 19207 | 15 | 6 | 7397808 | 19207 | 11 | 3 |
| 6184279 | 19207 | 4 | 2 | 7412204 | 19207 | 14 | 26 |
| 6262467 | 19207 | 12 | 50 | 7412211 | 19207 | 14 | 6 |
| 7061277 | 19207 | 12 | 67 | 7413265 | 19207 | 14 | 25 |
| 700078 | 00000 | 12 | 68 | 7413286 | 19207 | 14 | 10 |
| 700603 | 21450 | 8 | 5 | 7413287 | 19207 | 15 | 9 |
| 700771 | 21450 | 3 | 9 | 7413289 | 19207 | 14 | 11 |
| 700795 | 00000 | 8 | 17 | 7520952 | 19207 | 2 | 9 |
| 700955 | 21450 | 3 | 2 | 7520956 | 19207 | 2 | 31 |
| 707617 | 0000 | 3 | 37 | 7520957 | 19207 | 2 | 30 |
| 708231 | 00000 | 3 | 33 | 7520958 | 19207 | 2 | 15 |
| 7010362 | 19207 | 16 | 1 | 7520959 | 19207 | 2 | 7 |
| 7010363 | 19207 | 16 | 2 | 7520965 | 19207 | 2 | 35 |
| 712663 | 00000 | 9 | 6 | 7520966 | 19207 | 2 | 2 |
| | | 10 | 21 | 7520967 | 19207 | 2 | 6 |
| 713421 | 00000 | 12 | 5 | 7520976 | 19207 | 2 | 8 |
| 714248 | 00000 | 12 | 47 | 7520979 | 19207 | 2 | 29 |
| 7061136 | 19207 | 12 | 1 | 7520980 | 19207 | 2 | 34 |
| 7061137 | 19207 | 12 | 2 | 7520987 | 19207 | 2 | NI |
| 7061159 | 19207 | 12 | 6 | 7520988 | 19207 | 2 | 16 |
| 7061160 | 19207 | 12 | 17 | 7520989 | 19207 | 2 | 13 |
| 7061194 | 19207 | 12 | 60 | 7520990 | 19207 | 2 | 14 |
| 7061210 | 19207 | 12 | 70 | 7520993 | 19207 | 3 | 1 |
| 7061211 | 19207 | 12 | 69 | 7520994 | 19207 | 3 | 3 |
| 7061265 | 19207 | 12 | 39 | 7520995 | 19207 | 1 | 3 |
| 7061266 | 19207 | 12 | 38 | 7521003 | 19207 | 3 | 23 |
| 7061267 | 19207 | 12 | 29 | 7521004 | 19207 | 2 | 18 |

Part Number Cross Referenced to Figure and Item Number-Continued

| Part Number | FSCM | Fig. No. | Item No. | Part Number | FSCM | Fig. No. | Item No. |
|-------------|-------|----------|----------|-------------|-------|----------|----------|
| 7521005 | 19207 | 3 | 14 | 7521284 | 19207 | 11 | 17 |
| 7521006 | 19207 | 3 | 18 | 7521285 | 19207 | 11 | 28 |
| 7521007 | 19207 | 2 | 19 | 7521340 | 19207 | 8 | 28 |
| 7521008 | 19207 | 3 | 6 | 7521241 | 19207 | 9 | 15 |
| 7521009 | 19207 | 3 | 13 | 7521263-1 | 19207 | 6 | 1 |
| 7521010 | 19207 | 3 | 4 | 7521264 | 19207 | 6 | 20 |
| 7521014 | 19207 | 11 | 1 | 7521272 | 19207 | 6 | 13 |
| 7521015 | 19207 | 3 | 8 | 7521373 | 19207 | 8 | 23 |
| 7521016 | 19207 | 3 | 11 | 7521375 | 19207 | 8 | 29 |
| 7521017 | 19207 | 3 | 15 | 7521376 | 19207 | 8 | 26 |
| 7521018 | 19207 | 3 | 9 | 7521383 | 19207 | 8 | 8 |
| 7521019 | 19207 | 3 | 17 | 7521387 | 19207 | 8 | 11 |
| 7521020 | 19207 | 3 | 10 | 7521390 | 19207 | 8 | 12 |
| 7521021 | 19207 | 3 | 20 | 7521391 | 19207 | 9 | 14 |
| 7521022 | 19207 | 3 | 5 | | | 10 | 13 |
| 7521023 | 19207 | 3 | 12 | 7521433 | 19207 | 9 | 19 |
| 7521024 | 19207 | 3 | 7 | | | 10 | 25 |
| 7521029 | 19207 | 3 | 26 | 7521434 | 19207 | 9 | 8 |
| 7521032 | 19207 | 2 | 28 | 7521437 | 19207 | 10 | |
| 7521036 | 19207 | 3 | 30 | 7521438 | 19207 | 8 | 22 |
| 7521038 | 19207 | 2 | 23 | 7521439 | 19207 | 6 | 7 |
| 7521030 | 19207 | 3 | 34 | 7521441 | 19207 | 6 | 8 |
| 7521031 | 19207 | 3 | 24 | 7521446 | 19207 | 6 | 9 |
| 7521032 | 19207 | 2 | 27 | 7521448 | 19207 | 11 | 37 |
| 7521037 | 19207 | 3 | 28 | 7521487 | 19207 | 8 | 18 |
| 7521039 | 19207 | 2 | 25 | | | 9 | 21 |
| 7521045 | 19207 | 3 | 35 | | | 10 | 27 |
| 7521046 | 19207 | 3 | 25 | 7521488 | 19207 | 11 | 19 |
| 7521047 | 19207 | 3 | 31 | 7521490 | 19207 | 11 | 2 |
| 7521048 | 19207 | 2 | 36 | 7521573 | 19207 | 7 | 9 |
| 7521049 | 19207 | 3 | 32 | | | 7 | 8 |
| 7521055 | 19207 | 4 | 31 | 7521575 | 19207 | 8 | 6 |
| 7521056 | 19207 | 4 | 1 | 7521581 | 19207 | 8 | 14 |
| 7521057 | 19207 | 4 | 29 | 7521583 | 19207 | 8 | 3 |
| 7521058 | 19207 | 12 | 56 | 7521584 | 19207 | 8 | 1 |
| | | 4 | 14 | 7521585 | 19207 | 6 | 11 |
| 7521059 | 19207 | 4 | 30 | 7529383 | 19207 | 11 | 8 |
| 7521060 | 19207 | 4 | 15 | 7538656 | 19207 | 12 | 53 |
| 7521061 | 19207 | 2 | 17 | 7538658 | 19207 | 12 | 55 |
| 7521062 | 19207 | 4 | 3 | 7538660 | 19207 | 12 | 41 |
| 7521093 | 19207 | 4 | 20 | 7538661 | 19207 | 12 | 42 |
| 7521094 | 19207 | 4 | 13 | 7538668 | 19207 | 12 | 37 |
| 7521095 | 19207 | 4 | 23 | 7538671 | 19207 | 12 | 44 |
| 7521096 | 19207 | 4 | 21 | 7538672 | 19207 | 12 | 43 |
| 7521097 | 19207 | 4 | 16 | 7538673 | 19207 | 12 | 45 |
| 7521099 | 19207 | 4 | 28 | 7538674 | 19207 | 12 | 54 |
| 7521100 | 19207 | 4 | 18 | 7538679 | 19207 | 12 | 31 |
| 7521101 | 19207 | 4 | 25 | 7539011 | 19207 | 8 | 15 |
| 7521102 | 19207 | 11 | 15 | 7539023 | 19207 | 4 | 8 |
| | | 19207 | 7 | 7539146 | 19207 | 4 | 7 |
| 7521234 | 19207 | 7 | 16 | 7539169 | 19207 | 11 | 44 |
| 7521235 | 19207 | 7 | 17 | 7539700 | 19207 | 12 | 40 |
| 7521237 | 19207 | 11 | 16 | 7696481 | 19207 | 12 | 61 |
| | | 6 | 27 | 7699003 | 19207 | 15 | 22 |
| 7521240 | 19207 | 9 | 3 | 7700135 | 19207 | 7 | 11 |
| 7521241 | 19207 | 6 | 30 | 7702649 | 19207 | 7 | 7 |
| | | 7 | 10 | 7735601 | 19207 | 15 | 3.2 |
| | | 10 | 28 | 7735641 | 19207 | 6 | 17 |
| 7521242 | 19207 | 7 | 13 | 7748541 | 19207 | 2 | 20 |
| | | 11 | 10 | 7950356 | 19207 | 2604 | |
| 7521275 | 19207 | 6 | 31 | 7971286 | 19207 | 6 | 16 |
| 7521276 | 19207 | 7 | 12 | 8327009 | 19207 | 10 | 12 |
| | | 11 | 9 | | | 12 | 28 |
| 7521277 | 19207 | 6 | 29 | 8327904 | 19207 | 8 | 20 |
| 7521283 | 19207 | 11 | 42 | 8328007 | 19207 | 15 | 14 |

Part Number Cross Referenced to Figure and Item Number-Continued

| Part Number | FSCM | Fig. No. | Item No. | Part Number | FSCM | Fig. No. | Item No. |
|-------------|-------|----------|----------|-------------|-------|----------|----------|
| 8328008 | 19207 | 14 | 13 | 8743044 | 19207 | 12 | 7 |
| 8328010 | 19207 | 13 | 11 | 8743049 | 19207 | 2 | 22 |
| 8328015 | 19207 | 14 | 2 | | | 4 | 11 |
| 8329891 | 19207 | 9 | 10 | 8757599 | 19207 | 11 | 5 |
| 8329892 | 19207 | 9 | 17 | 8757674 | 19207 | 7 | 14 |
| | | 9 | 18 | | | 11 | 11 |
| 8331791 | 19207 | 5 | 2 | 8757686 | 19207 | 15 | 3 |
| 8344155 | 19207 | 12 | 3 | 8757704 | 19207 | 7 | 3 |
| 8344200-1 | 19207 | 6 | 12 | 8757705 | 19207 | 11 | 43 |
| | | 14 | 4 | 8757706 | 19207 | 11 | 26 |
| 8376462 | 19207 | 9 | 5 | 8757707 | 19207 | 11 | 30 |
| 8380558 | 19207 | 11 | 29 | 8757709 | 19207 | 11 | 36 |
| 8380559 | 19207 | 11 | 23 | 8757711 | 19207 | 11 | 8 |
| 8675959 | 19207 | 6 | 21 | 8757713 | 19207 | 7 | 4 |
| 8380559 | 19207 | 11 | 23 | 8758292-2 | 19207 | 10 | 5 |
| 8675959 | 19207 | 6 | 21 | 8758294 | 19207 | 10 | 9 |
| 8708724 | 19207 | 6 | 4 | 8758299 | 19207 | 10 | 10 |
| 8708279 | 19207 | 16 | 3 | 878355 | 19207 | 12 | 51 |
| 8712073 | 19207 | 2 | 12 | | | | |

By Order of the Secretary of the Army:

FRED C. WEYAND
General, United States Army
Chief of Staff

Official:

PAUL T. SMITH
Major General, United States Army
The Adjutant General

Distribution:

To be distributed in accordance with DA Form 12-38 (qty rqr block No. 45) Direct and General Support maintenance requirement for 2 1/2 Ton, 6x6, M34; M35A1; A2 and A2C; M36, A2 and A3, M36C.

